

SERENE  HOUSE®

Paris · London · New York · Taipei · Shanghai

www.serene-house.com

SERENE  HOUSE®



Instruction Manual

Donut II / Design by Carsten Jörgensen

Please read this manual carefully before using the Scentilizer.

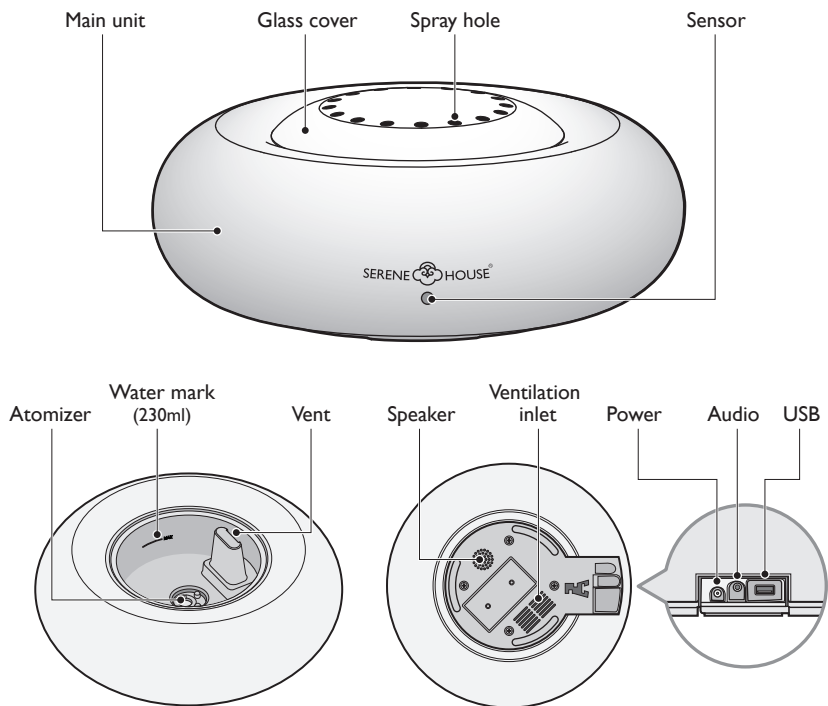
After reading this manual,
please keep it in a readily accessible place.

Table of Contents

Main Unit.....	04
Accessories.....	05
Operating Instructions.....	06
Remote Control.....	09
Cleaning & Maintenance.....	12
Safety Precautions.....	14
Specifications.....	17
Troubleshooting.....	18

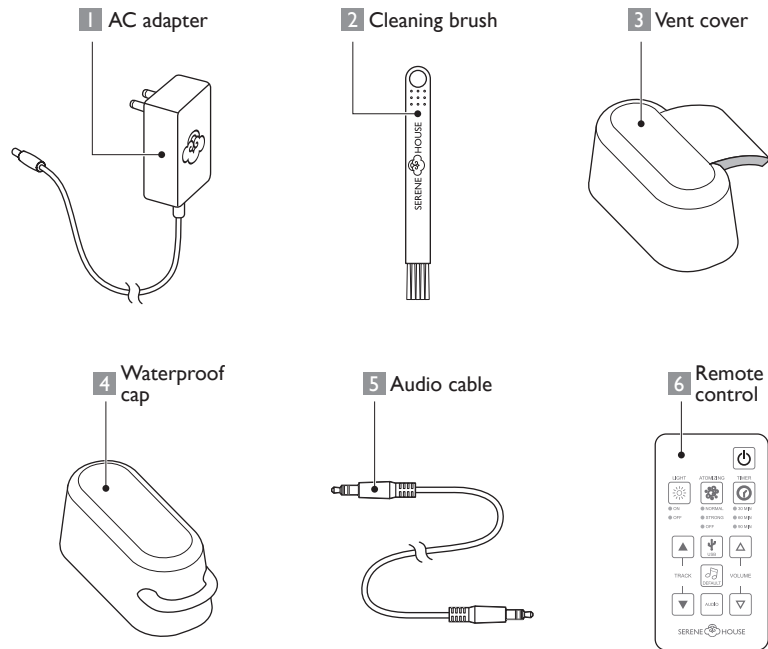
The Product

Donut II (111101005 White / 111101006 Black)



Accessories

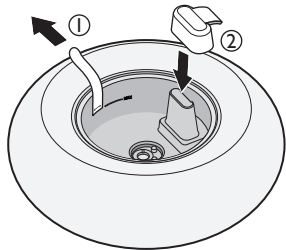
Please check if all the following items are present and if there is any damage before use.



Operating Instructions

- Always place your Scentilizer on a firm, flat, and level surface.
- Condensation may form on the Scentilizer causing the floor to become wet during summer when humidity is high or during winter when room temperature is low.

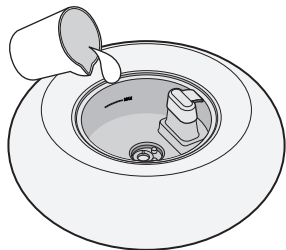
1



Remove the water level label and place the vent cover into the vent in the tank. (as shown in diagram left) .

- Be sure to follow this instruction to prevent water from flowing into the vent hole and causing malfunction.

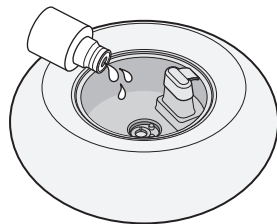
2



Add water slowly into the water tank and make sure the water level does not exceed its designated water mark level. Please avoid adding water near the vent area.

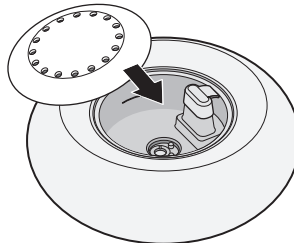
- Please filter the tap water to reduce the limes before use.
- For best result, do not use pure water, distilled water or other liquids.
- Water should be in room temperature (25°C ~ 40°C) (76.9°F-103.9°F) Do not use water below 25°C (76.9°F) .
- Never add water into the vent hole.

3



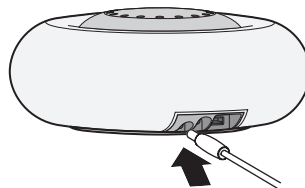
Add 5-10 drops of SERENE HOUSE 100% natural essential oil into the tank. Please do not let the essential oil drip onto the exterior of the Scentilizer.

4



Make sure the vent cover is correctly covering the vent (as shown in left diagram) and the glass cover is properly in place. Use a clean cloth to gently wipe the surface of this Scentilizer, if needed.

5



Insert the AC adaptor into the socket of the main unit, as shown in the left diagram.

7

6



Use the remote control and press the power button to start the unit.

- The remote control goes off to power-saving mode when not in used for more than 10 seconds. You may press any button to restore the default status or continue to perform other operations.

7

The machine starts to operate.

8

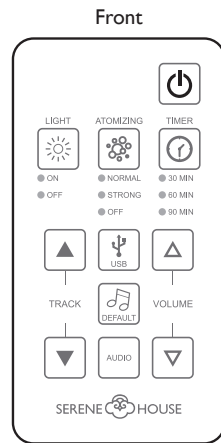
The built-in LED lights of this Scenzilizer will flash when the water level is near empty. The Scenzilizer will automatically stop operating shortly after. For immediate re-use, please empty the residual water and replenish water accordingly.

9

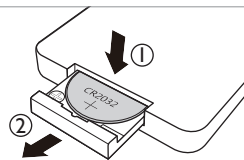
For the best performance, make sure to clean your Scenzilizer after each use.

- Please follow the instructions on page 12 in this manual for proper cleaning and maintenance.

Remote Control



back



CR2032 :
Lithium battery,
included.



POWER BUTTON :
Turns the machine on and off.



LIGHT BUTTON :
Turns the LED light on and off.



ATOMIZING BUTTON :
Controls the atomization mode normal / strong / off.



TIMER BUTTON :
Sets the machine's automatic off time, 30 / 60 / 90 minutes and continuous mode.



MUSIC SELECTION BUTTON (Up) :
Selects the previous track when using the USB playback function.



MUSIC SELECTION BUTTON (Down) :
Selects the next track when using the USB playback function.



USB BUTTON :
Plays the music files in the USB device.



DEFAULT BUTTON :
Plays the built-in music.



AUDIO BUTTON :
Plays the external 3.5mm audio input port's music.




VOLUME ADJUSTMENT BUTTON :
Increases the volume of music.





VOLUME ADJUSTMENT BUTTON :
Reduces the volume of music.



POWER SETTING

1. Press the POWER button  to enter operation mode.
2. The ON / OFF button makes the unit work / standby (atomization function stops; when in standby mode, you can still use the remote control to start related functions) .




ATOMIZING SETTING

1. Press ATOMIZING  to enter the setting mode.
2. Press ATOMIZING  repeatedly to select the atomization mode.
 - Press once – (STRONG) Full power of atomizing.
 - Press twice – (NORMAL) Minimal power of atomizing.
 - Press three times – (Off) turn off the atomizing.



LIGHT SETTING

1. Press LIGHT  to enter setting mode.
2. Press LIGHT  repeatedly to turn the LED lights on or off.



AUDIO SETTING

1. When the machine is on, the music mode is set to built-in audio source.
2. Press USB  to activate the USB audio source.
 - Supported format for USB playback : MP3, WMA.
3. Press AUDIO  to activate the external audio source.
4. Press DEFAULT  to activate the built-in music source.



ATOMIZING TIME SETTING

1. To adjust the atomizing time setting, press TIMER  to enter setting mode.
2. Press TIMER  repeatedly to select the atomizing mode.
3. The set time (in minutes) order is : 30 / 60 / 90 / continual (the indicator goes off)

VOLUME

1. To adjust the volume level, press the VOLUME button, Volume Up  , Volume Down  ; there are a total of 16 volume levels.

TRACK SELECTION

1. To select a music track, press TRACK, Previous Track  , Next Track  .
2. The track selection function can only be used for USB audio source mode.

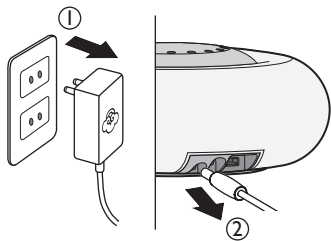
Caution

- NEVER connect the power without covering the glass cover.
- Do not remove the glass cover or block the spray hole(s) of the glass cover during use.
- Never open the glass cover or put your finger or other objects into the tank while the product is in operation as water leakage, injury, or malfunction may occur.
- Make sure to pour out the water that has been in use for over 24 hours.
- For best performance, we recommend SERENE HOUSE essential oils with this Scenitizer. Use of other essential oils may cause damage to the product.
- Make sure to wipe clean with a cloth if oil drips on the main unit or floor.

Cleaning & Maintenance

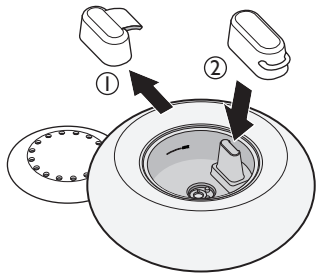
- Always disconnect the AC adapter from the electrical outlet before cleaning.
- For best atomizing performance, please clean the Scentilizer after each use.

1



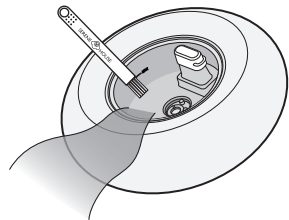
Remove the AC adapter from the electrical outlet and then remove the plug from the main unit.

2



Remove the glass cover, pull out the vent cover and place with the waterproof cap provided on the vent hole.

3



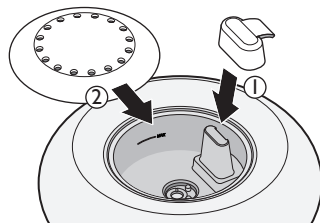
Empty the water in the tank, add a small amount of warm water (do not exceed 40°C) (103.9°F) , and a few drops of neutral cleanser. Use the cleaning brush provided to clean the internal surface of the water tank. Gently rinse all the soap out of the water tank after washing. do not use dishwashing liquid.

4



Use a clean cloth to wipe off excess water on the surface of the Scentilizer.

5



Remove the waterproof cap. Cover the vent hole with its vent cover and cover the water tank with its glass cover.

- Never use acidic cleansers as this may cause malfunction.
- The glass cover breaks easily, please handle with care when cleaning.
- Do not clean the Scentilizer directly under the faucet to prevent water from flowing into the ventilation inlet and cause malfunction. If water accidentally flows into the main unit, please allow internal mechanism to dry thoroughly (at least 6 hours) before the next use.

Safety Precautions

For safety, please be sure to follow these instructions :

- The precautions listed in this manual are to ensure safe and proper use of this product by the user, and to avoid any danger or loss that might occur.



Warning

	<ul style="list-style-type: none">• Stop using the product immediately and unplug the AC adapter once smoke, smell, unusual sounds or other anomalies occur.
	<ul style="list-style-type: none">• Do not modify, fix, or dismantle this product, as fire, electric shock, damage, or injury may occur.
	<ul style="list-style-type: none">• When the product is at the end of its life, we recommend disposal at a collection point for the recycling of electrical and electronic equipment, rather than with household waste. The symbols on the product, instruction manual, and packaging allow for proper sorting and disposal.
	<ul style="list-style-type: none">• Adaptor input rating AC 100V - 240V 50 / 60Hz.• Only the included AC adapter may be used with the product, using other products may result in fire.• Do not connect the AC adapter to the main unit when installing, as electric shock and injury may occur.• The product should always be unplugged and the water container should always be empty when moving the product or when the product is not in operation.• When unplugging the AC adapter from the outlet, do not pull on the wire, Hold the AC adapter firmly and then unplug it, or else damage or injury may occur.• Please avoid dripping the essential oil onto the exterior of the product or onto furniture. If essential oil dripping accidentally occurs, wipe off immediately to avoid fading of the exterior of the product or the furniture.• The AC adapter will heat up when the product is operating; this is normal.



- Do not use the product when electric cord or plug is damaged or the product has been accidentally hit, dropped, broken, or damaged in any way.
- Do not handle the main unit and AC adapter with wet hands, or let water or other liquids stick to or spray onto them, as this may result in an electric shock.
- This product is not a toy. Do not let children use this product. Keep out of reach of children as electric shock and injury may occur. Children should be properly supervised to ensure that they will not play with this product at all times.
- **KEEP OUT OF REACH OF CHILDREN AND PETS.**
- The product must be disconnected from the electrical outlet before use and maintenance.
- This product is not intended for use by persons (including children) with reduced physical, sensory, or mental capabilities, or lack of experience and knowledge, unless they have been given supervision or instruction concerning use of the product by a person responsible for their safety.
- Do not intentionally inhale the mist emitting from the product nozzle. This may be harmful to your health.
- Do not open the glass cover or put your finger or other objects into the tank while the product is in operation as water leakage, injury, or malfunction may occur.
- Do not place the product on a carpet.
- To avoid fire, electric shock, injury or damage, do not place the product in the areas listed below :
 - * In direct sunlight or next to a heating appliances
 - * In dusty places
 - * On tilted, unstable, or uneven surfaces
 - * Places full of smoke or next to stoves
 - * Next to or above electrical products (TV, stereo, refrigerator, etc.)
- Do not bend, heat, or place heavy objects on the power cord as fire or malfunction may occur.

Precautions before use

- Please read all instructions before using the product. Use it safely and correctly.
- This product is a vaporized fragrance diffuser and uses ultrasonic vibration technology to generate fragrant vapors, it also has a seven-color LED lighting function.
- Read the “**Operating Instructions**” section on page 6 ~ page 8 of this manual for correct operation.
- Make sure to read and follow the “**Maintenance**” instructions on page 12 of this manual for cleaning and maintenance.
- Parts of the main unit are made of porcelain and glass, be sure to handle and use with caution.
- The product’s main unit is delicate and may sustain damage during transportation. If the product leaks when filled with water, please contact our distributor or customer care center immediately.
- This product is manufactured using the ultrasonic atomization principle, and can only be used for spreading fragrance, it does not have humidification functions.

Notes on the use of oils

For best performance of this Scenzilizer, we recommend using SERENE HOUSE essential oils.

- Essential oils are highly concentrated oils. Use with caution.
- Do not spill the oils as they may damage plastic objects and furniture.
- Children and pets are very sensitive to essential oils. Use with caution.
- Stop using the product and open the windows for ventilation if you start to feel uncomfortable.
- Be sure to use appropriate amounts of essential oil.
- If you have any special physical conditions, such as pregnancy, lung failure, cancer, epilepsy or other illnesses, please consult your doctor before using essential oils.

Specifications

Product name	Donut II	
Model code	111101005 White / 111101006 Black	
Atomization mode	Ultrasound	
Atomizing ability	(Normal) 25-30 ml /h (0.8-1.0 fl. oz./h) (Strong) 55-60 ml /h (1.9-2.0 fl. oz./h)	Test results may vary depending on ventilation, temperature, humidity, and height of space.
Continuous atomization time	(Normal) Approx. 8 - 9 hrs (Strong) Approx. 3 - 4 hrs	
Suggested room size	25 - 45 m ² (270 - 485 ft ²)	
Ultrasonic frequency (MHz)	1.70 ±4%	
Water tank capacity	230ml (7.8 fl. oz.)	
Input	DC24V	
Output	DC5V 500mA	
Rated power	18W	
Remote control battery	Lithium battery CR2032	
Product size	Φ27 × H 9.5 cm (Φ10.6"× H 3.7")	
Main unit weight	Approx. 2120g, (4.7 lbs) Including main unit, glass cover and AC adapter	
Operation mode	Remote control	
Music mode :		
Built-in music	Repeat playback, built-in speakers	
USB mode	Supports MP3 /WMA formats	
Audio mode	Plays back external 3.5mm audio input port	
Country of origin	China	
Accessories	AC adapter, remote control, cleaning brush, audio cable, waterproof cap, vent cover, warranty card,	

Patent Product

Troubleshooting

If you experienced unsatisfactory operations, please follow our troubleshooting guidelines listed below.

Machine does not operate

- Check the adapter
→ Make sure the adapter is correctly plugged into the electrical outlet.
- Power cord not connected to the main unit.
→ Be sure plug is inserted into the main unit correctly.
- Check remote control.
→ Replace a new battery for the remote control.
- Remote control is used too far away from the product.
→ Be sure the remote control is used within the receiving range (4 meters and 10° angel of distance from the sensor) .

The product does not atomize or does not atomize effectively

- Check the water temperature.
→ Please use tap or mineral water between 25°C and 40°C (76.9°F-103.9°F) .
- Check the water type used.
→ Be sure to use tap or mineral water. Do not use pure water or distilled water.
- Check the water volume.
→ Make sure the water do not exceed its designated water mark level.
- Dirty atomizer.
→ Follow the “Maintenance” instructions on page 12.
- Placement of the product.
→ Place on a firm, level, and stable surface where unaffected by wind.
- Check the remote control
→ Switch to the desired atomizing amount mode with the remote control, if the ATOMIZING button is OFF and the lights indicator is ON.

Volume too high or too low

- Volume adjustment button improperly set.
→ Adjust the volume control with the remote control to increase volume or to reduce volume.

LED lights not functioning

- Check the LED light setting with the remote control.
→ Be sure to turn on the light setting with the remote control.

Do not attempt to dismantle or repair the product by yourself.

If the unit still does not operate satisfactorily, please visit our website www.serene-house.com, and click link "Support", or contact our customer service.



RoHS
compliant

