

SERENE  HOUSE<sup>®</sup>

New York · Paris · Shanghai · Taipei

[www.serene-house.com](http://www.serene-house.com)

SERENE  HOUSE<sup>®</sup>

## Instruction Manual



**Dew**

Automatic Scent Diffuser

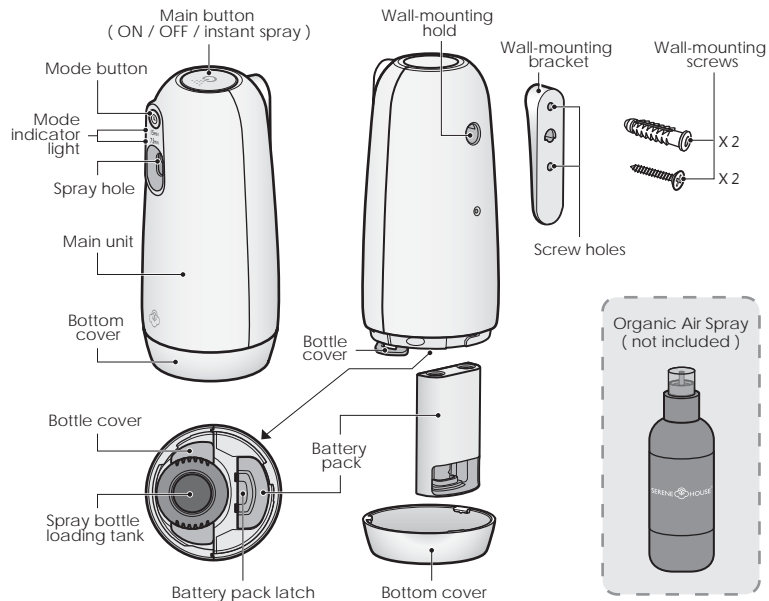
**Please read this manual carefully before using the product.**

**After reading this manual, please keep it in a readily accessible place.**

## Product & Accessories

Dew ( 121209001 White )

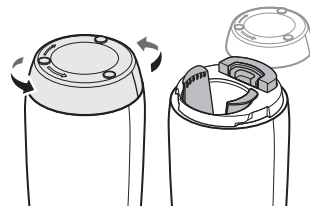
- Check if all following items are present and if there is any damage before use.



## Operating Instructions

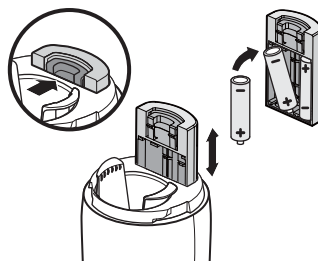
- Place the product on a firm, flat, and level surface.
- Remove all packaging before use.

### Step 1 : Unscrew the bottom cover



Hold the device and turn it upside down so the bottom is facing upwards. Turn the bottom cover counter-clockwise to remove it. You will see the spray bottle refill tank, the bottle cover, and the battery pack.

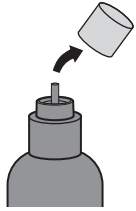
### Step 2 : Install the batteries



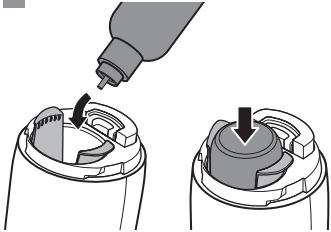
Release the battery pack latch and remove the battery pack. Install three new AA alkaline batteries and insert the battery pack back into the device.

- Use three AA alkaline batteries of the same brand.
- Install the batteries in the correct orientation as indicated on the battery pack.

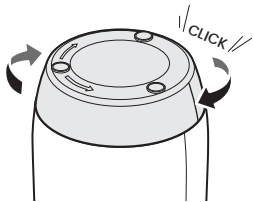
### Step 3 : Install the Organic Air Spray



Remove the protective cover from a new Organic Air Spray.

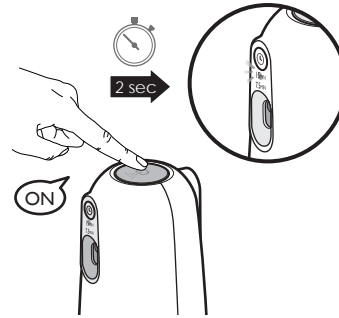


Place the Organic Air Spray inside the spray bottle loading tank. Use the bottle itself and the bottle cover to push the bottle all the way into the main unit.



Turn the bottom cover clockwise to reattach it to the main unit. Ensure that it is securely attached to the device. You will feel a click when it is securely attached.

### Step 4 : Start the device



Do not aim the spray hole at human body! To start the device, press and hold the main button for **more than 2 seconds** until the green light comes on.

- The device will emit the first spray 15 seconds after being started.
- The red light will blink three times as a warning each time before the device emits a spray.
- The preset spray mode is the 15-minute mode.
- When using the device for the first time or after replacing the batteries, the start of the spraying interval is when the device is turned on. See "Modes and Settings" for details and settings.
- **After installing a new Organic Air Spray, note that the first several sprays may not emit properly. This is normal and will return to normal after the device has emitted several sprays.**

# Modes and Settings

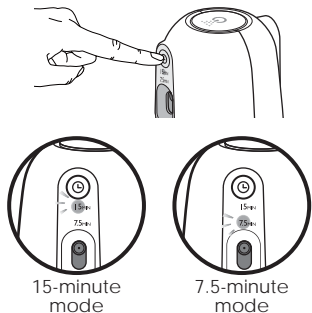
- The device operates on a 24-hour cycle: A **6-hour spray interval (blinking green light)** and an **18-hour standby interval (blinking red light)**.
- **When the device is turned on, the spraying interval starts.**

## Reset the Start Time of the Spray Interval

To reset the start time of the spray interval, first **turn off the device and then start the device** at the time you want to set as the start time of the spray interval.

Example : While the device is turned off, press and hold the main button at precisely 12 noon to turn it on. The device will continuously run the spray interval for 6 hours from 12 noon. At precisely 6 PM, the device will enter standby mode for 18 hours. At precisely 12 noon on the next day, the device will automatically begin the spray interval. The device will remember the time setting for the spray interval; there is no need to adjust the setting each day.

## Change the Spray Mode

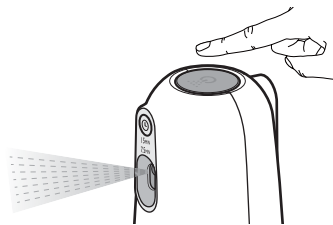


- **Lightly** press the mode button to switch between the 15-minute mode and 7.5-minute mode.
- **15-minute mode** : The device will emit one spray every 15 minutes within the 6-hour spray interval. It is necessary to replace the Organic Air Spray once every 30 days.
- **7.5-minute mode (enhanced mode)** : The device will emit one spray every 7.5 minutes within the 6-hour spray interval. It is necessary to replace the Organic Air Spray once every 14 days.

## Indicator Lights

- The spray interval is indicated by a blinking green light; the standby interval is indicated by a blinking red light.
- When the upper and lower red lights both blink, it is a warning that there is insufficient power remaining. Replace the batteries immediately.
- The red light will blink three times as a warning each time before the device emits a spray.

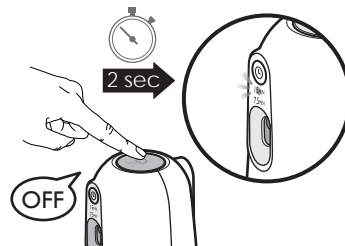
## Instant Spray Function



While the device is operating, **lightly** press the main button to instantly emit a spray.

- The instant spray function can be used even in standby mode.

## Turn the Device Off

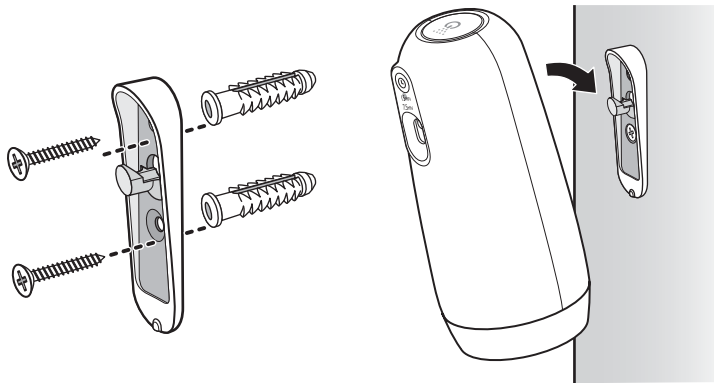


While the device is operating, press and hold the main button for **more than 2 seconds** until the red light comes on and the device is turned off.

## Mounting the Device on a Wall

First fix the wall-mounting bracket to the wall and then mount the device.

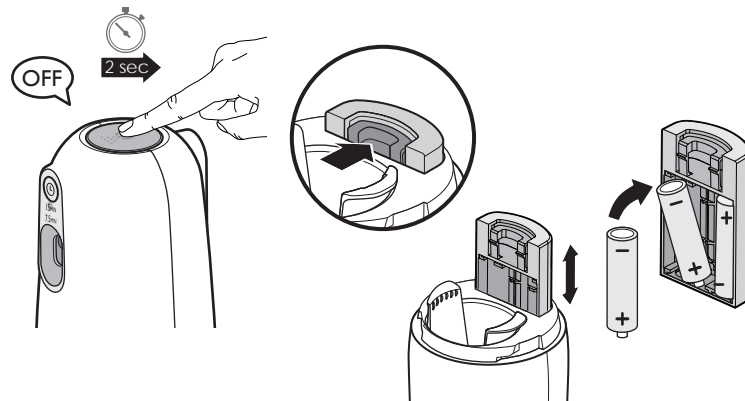
- Choose where to mount the device carefully so the device would not accidentally spray onto human body or eyes.
- It is recommended that the device be mounted higher than 180 cm from the floor for optimum fragrance dispersal effects.
- In order to prevent the device from falling, do not operate the device while it is mounted.



## Replacing the Batteries

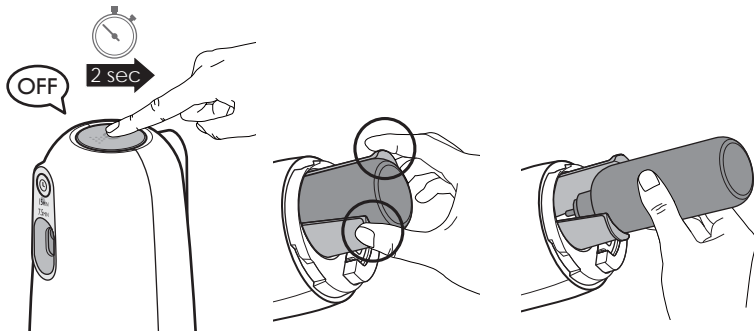
**When the upper and lower red lights both blink**, this indicates that there is insufficient power remaining. See Step 1 and Step 2 of "Operating Instructions" for battery replacement.

- Each time you replace the batteries, it is necessary to reset the start time of the spray interval. See "Modes and Settings" for operating instructions.

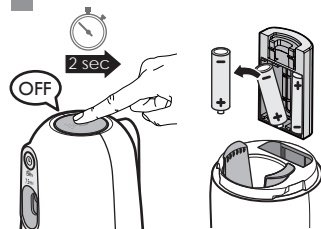


## Replacing Organic Air Spray

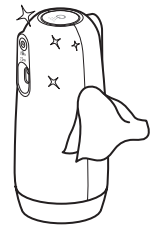
1. First turn off the device and unscrew the bottom cover to remove it.
2. **Pull out the bottle cover** and remove the Organic Air Spray.
3. Install a new bottle as instructed in Step 3 of "Operating Instructions".
  - In order to prevent spray bottles from falling and cause accidents, please remove the device from the wall before replacing the spray bottle.
  - **After installing a new Organic Air Spray and turning on the device, the first several sprays may not emit properly. This is normal and will return to normal after the device has emitted several sprays.**



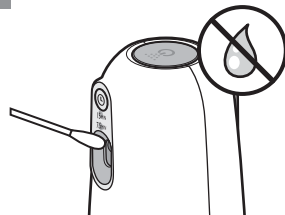
## Cleaning & Maintenance



Always turn off the device and remove the batteries before cleaning and maintenance.



Keep the device clean by wiping the surface with clean cloth. Never use non-neutral detergents as they may cause the device to malfunction.



Do not allow water to enter the nozzle or button area as it may cause malfunction.





- If the spray nozzle is dirty, first turn off the device and clean the nozzle using a cotton swab soaked in water or alcohol.


# Safety Precautions

For safety, be sure to follow these instructions :

- The precautions listed in this manual are to ensure safe and proper use of this product by the user, and to avoid any danger or loss that might occur to the user or others.
- "WARNING" contains important safety instructions. Be sure to follow these instructions.

## WARNING

	<ul style="list-style-type: none"> <li>• Stop using the product immediately and remove the batteries once smoke, smell, unusual sounds, or other anomalies occur. Keep using it may result in fire, electric shocks or other hazards.</li> </ul>
	<ul style="list-style-type: none"> <li>• Do not modify, fix, or dismantle this product, as fire, electric shock, or damage may occur.</li> </ul>
	<ul style="list-style-type: none"> <li>• When the main unit is at the end of its life, we recommend disposal at a collection point for the recycling of electrical and electronic equipment, rather than with household waste. The symbols on the product, instruction manual and packaging allow for proper sorting and disposal.</li> </ul>
	<ul style="list-style-type: none"> <li>• Use three AA alkaline batteries of the same brand, otherwise the device may malfunction.</li> <li>• When this product is not used for a long period of time, be sure to remove the batteries in order to avoid oxidation, otherwise the device may malfunction.</li> <li>• Avoid dripping Organic Air Spray onto the exterior of the product or onto furniture. If Organic Air Spray dripping accidentally occurs, wipe off immediately to avoid discoloration of the exterior of the product or the furniture.</li> </ul>

	<ul style="list-style-type: none"> <li>• Do not turn on the device without an Organic Air Spray installed.</li> <li>• Do not remove the bottom cover while the device is in operation.</li> <li>• Do not allow foreign objects to block the spray nozzle or spray hole. Ensure that you turn off the device and remove the batteries before performing cleaning and maintenance.</li> <li>• Do not operate the device with wet hands, or let water or other liquids attach to or spill onto the device as this may cause injury or malfunction.</li> <li>• If oxidation or damage occurs within the battery pack, or the product has been accidentally hit, dropped, broken or damaged in any way, otherwise problems such as injury or malfunction may occur.</li> <li>• Do not heat the device or place any objects on the device, otherwise malfunction may occur.</li> <li>• Do not approach or inhale the spray emitted from the spray hole. This may be harmful to your health.</li> <li>• Keep the device out of reach of children, otherwise injury may occur. Children should be supervised to ensure that they do not touch with the device.</li> <li>• This product is not intended for use by persons with reduced physical, sensory, or mental capabilities, unless they have been given supervision or instruction concerning use of the product by a person responsible for their safety.</li> <li>• To avoid fire, electric shock, injury, or damage, do not place the product in the areas listed below :             <ul style="list-style-type: none"> <li>* In direct sunlight or in a high-temperature environment</li> <li>* In dusty places</li> <li>* On tilted, unstable, or uneven surfaces</li> <li>* Sources of ignition</li> <li>* Near pressurized or flammable substances</li> <li>* Carpets or other soft surfaces</li> </ul> </li> <li>• While the device is in use, do not open the bottom cover before turning off the power, otherwise hazard or malfunction may occur.</li> </ul>
---	--



## Precautions for use

- Read all instructions before using the product. Use it safely and correctly.
- This product can only be used for fragrance dispersal.

## Notes on the use of Organic Air Spray

Use SERENE HOUSE Organic Air Spray.

- Only SERENE HOUSE Organic Air Spray can be used with this product. Do not install other liquids or replace with other bottles.
- Organic Air Spray may dissolve plastic or paint on furniture. If Organic Air Spray is accidentally dripped onto the exterior of the device or surrounding objects, wipe clean immediately with a cloth.
- Children and pets are very sensitive to fragrances. Use with caution.
- Stop using the product and open the windows for ventilation if you start to feel uncomfortable.
- If you have any special health conditions, such as pregnancy, lung failure, cancer, or epilepsy, it is recommended to consult with your doctor before using Organic Air Spray.

## Specifications

Product name	Dew	
Model code	121209001 White	
Operating modes	15 - minute mode / 7.5 - minute mode	
Continuous use time	15 - minute mode : Change the Organic Air Spray bottle approximately once per month 7.5 - minute mode : Change the Organic Air Spray bottle approximately once every 14 days	Test results may vary depending on ventilation, temperature, humidity, and height of space.
Suggested room size	5 ~ 10 m <sup>2</sup> ( 53.8 ~ 107.6 ft <sup>2</sup> )	
Power Input	DC 4.5 V	
Main unit weight	325 g ( 11.5 oz )	
Product size	8.7 cm L x 8.7 cm W x 19.3 cm H ( 3.4 in L x 3.4 in W x 7.6 in H )	
Accessories included	Wall-mounting bracket, wall-mounting screws, three AA alkaline batteries, warranty card	
Design	Taiwan	
Made in	China	

## Patent Product



RoHS  
compliant

# Troubleshooting

If you experience unsatisfactory operations, please follow our troubleshooting guidelines listed below.

## The device does not operate

- **Batteries are incorrectly installed**  
→ Correctly install the batteries as indicated on the battery pack and in the operating instructions, then check whether the device will turn on.
- **Batteries are depleted or have insufficient power remaining**  
→ If the battery power is too low, the device may not have enough power to operate properly. Replace the batteries with three new AA alkaline batteries.

## The device does not emit a spray

- **The device is in the standby interval**  
→ If the device is in the standby interval (indicated by a blinking red light), it is normal for it not to emit sprays.
- **A new Organic Air Spray bottle has just been installed**  
→ After installing a new Organic Air Spray, the first several sprays may not emit properly. This is normal and will return to normal after the device has emitted several sprays.
- **The Organic Air Spray is depleted**  
→ Replace the Organic Air Spray if there is no spray emitted or the spray is not effective after a period of use, and the upper and lower red lights are both blinking.

## The spray is not effective

- **Battery power is insufficient**  
→ Replace the batteries with three new AA alkaline batteries of the same brand.
- **The nozzle is dirty**  
→ Perform cleaning and maintenance according to the "Cleaning and Maintenance" section of this instruction manual.
- **A SERENE HOUSE Organic Air Spray has not been used**  
→ Purchase a SERENE HOUSE Organic Air Spray.

## Fragrance dispersal is ineffective

- **The device is placed on a carpet or other soft surface, or the wind is too strong where the device is used**  
→ Place on a level and stable surface unaffected by wind.
- **The device is placed in a space that is too large**  
→ For optimum fragrance dispersal, it is recommended that the device is used in a room of 5–10 m<sup>2</sup>.
- **The device is set to 15-minute mode**  
→ Adjust the device to 7.5-minute mode ( enhanced mode ).

Do not attempt to dismantle or repair the product by yourself. If the unit still does not operate satisfactorily, please visit our website [www.serene-house.com](http://www.serene-house.com), and click link "Support", or contact our customer service.

# Warranty card



This product is warranted against defective materials and workmanship. Warranty period is (1) year for USA & Canada, and (2) years for UK & Europe, from the original purchase. Any defective part will be replaced at no charge if it has not been tampered with and appliance has been used accordingly to our printed instructions.

If you experienced unsatisfactory operations, first follow Troubleshooting and Cleaning & Maintenance instructions. If the unit still does not operate satisfactorily, please call or write to a SERENE HOUSE authorized distributor.

Or you may visit our website as <http://www.serene-house.com/en/support.html> explaining just how the unit is operating. Specify your product name and model number, our distributor will provide further instructions on how to correct the trouble yourself, or will ask you to return the unit for repair or replacement.

This product warranty does not cover damages caused by misuse or abuse, accidents, the attachment of any unauthorized accessory, alteration to the product or any other conditions whatsoever that are beyond the control of SERENE HOUSE.

To validate your warranty, please complete all the information in the warranty card below and send it along with your purchase receipt copy to a local SERENE HOUSE distributor via fax or email.

This warranty is issued by SERENE HOUSE INTERNATIONAL ENTERPRISE LTD. is valid for <sup>1</sup> (1) year for USA & Canada, and <sup>2</sup> (2) years for UK & Canada, from the purchase receipt date	
Product name	Model Number
Store of Purchase	IN - STORE <input type="checkbox"/> ON - LINE <input type="checkbox"/>
<b>Customer Information</b>	
Family Name	Given Name
Street Address	
City	State
Zip code	Country
Telephone	Fax
E-Mail	
Purchase Receipt	SERENE HOUSE USA Inc. Distributors are located in : North America  1860 Renaissance Blvd. Sturtevant, WI 53177 T 1-877-357-5751 / T 1-262-886-2198 serenehousewarranty@lemanusa.com

There is no warranty with respect to the following which may be supplied with this product.  
They included ceramic chip, cleaning brush, scraping spoon, scented glass tube.