

SERENE  HOUSE®

www.serenehouse.com

00020150203

SERENE  HOUSE®

操作使用说明书



胶囊蜡香熏机

圆顶 · 弧线

CN

目录 / Table of Contents

简中 使用说明书 03

圆顶 / 弧线 胶囊蜡香熏机

胶囊香熏机系列 04 / 产品与配件介绍 05 / 使用说明 06

清洁保养 07 / 安全注意事项 08 / 障碍排除 10 / 产品规格 11

EN Instruction Manual 13

Dome / Oval Serene Pod® Scent Diffuser

Serene Pod® Scent Diffuser 14 / Product & Accessories 15

Operating Instructions 16 / Cleaning & Maintenance 17

Safety Precautions 18 / Troubleshooting 20 / Specifications 21

重要安全措施



注意!

每当使用电器具，必须按照下列次序的安全警惕基础而实行：

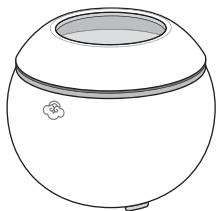
- A. 使用此产品前请细阅使用守则。
- B. 请勿将手或手指置于此产品之内。
- C. 为避免危险，幼童须在成人监督下使用产品。
- D. 当电源线损坏时，请勿继续使用本产品。
- E. 错误使用本产品，将可能导致火灾的意外，请依指示使用本产品，若使用其他介质将可能引发中毒或火灾的危险；请勿将本产品侵入水中，本产品仅供室内使用。

请勿让幼童独自使用，要放在幼童触及不到的地方，否则有可能造成触电、受伤。儿童应当受到监督以确保安全。

使用本产品之前，请务必详阅此使用说明书！说明书阅读后，请保存于可随时取用的场所。

胶囊香熏机系列

• 本说明书中包含圆顶、弧线两款胶囊香熏机种，机器操作使用与清洁方式均相同。



圆顶

设计灵感来自几何建筑，其外观呈现圆弧状，与巨蛋式的环形剧场两相辉映，微微灯光透析着圆融而温暖的感觉，命名圆顶，给人包容大气之感。

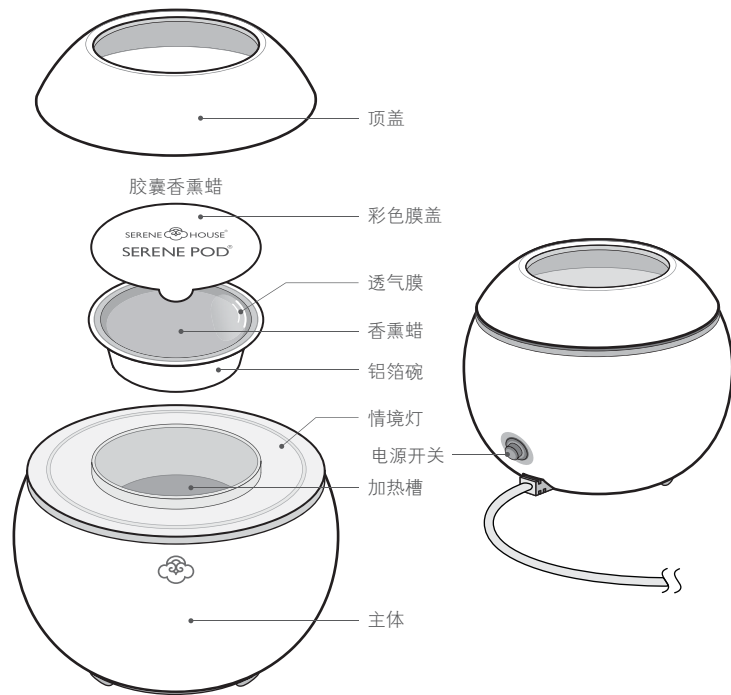


弧线

设计灵感一样来自几何建筑，产品外观线条鲜明，第一印象给人弧状的俐落感，因此命名为“弧线”，呼应空间及建筑之美学思维。

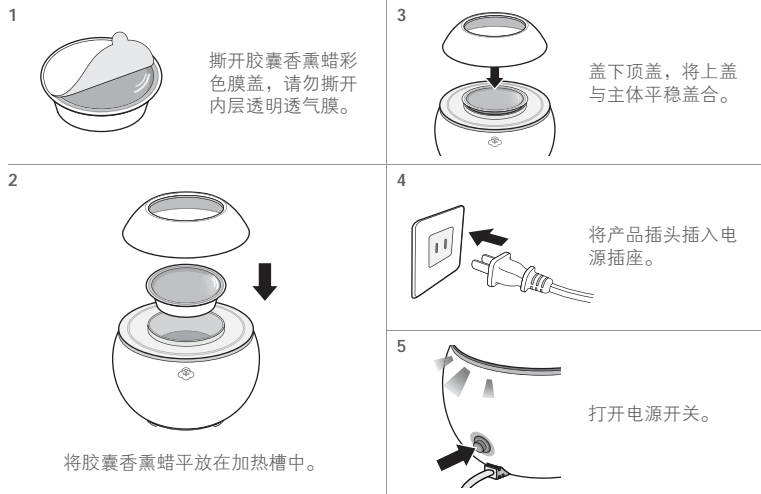
产品与配件介绍

• 本机器仅能使用 SERENE HOUSE 胶囊香熏蜡，胶囊香熏蜡为单独贩卖商品。



使用说明

- 使用前请去除所有包装

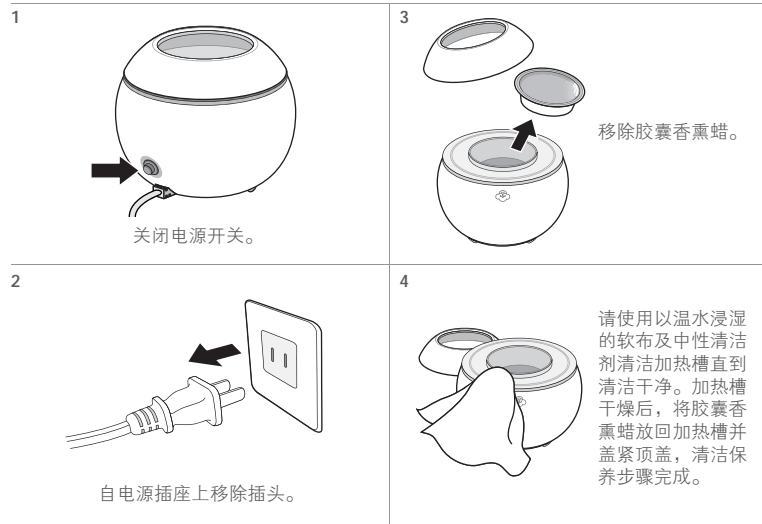


注意:

1. 本产品仅能使用 SERENE HOUSE 胶囊香熏蜡 Serene Pod[®]，勿将液体或其他物品放入加热槽内加热。
2. 胶囊香熏蜡可重复加热使用，若香味变淡或效果降低时建议更换新的胶囊香熏蜡；胶囊香熏蜡为耗材，请洽各地代理商购买。
3. 请勿于机器运作时任意移动及碰触本产品，待香熏蜡冷却成固态时方可取出。
4. 非使用时，请先关闭电源，并将插头自插座上移除。
5. 请在稳固、平坦、水平的地方使用本产品。

清洁保养

- 在每次清洁保养前，请务必先关闭开关，并将插头自插座上移除。
- 清洁保养时请特别小心，请勿直接浸泡或冲洗本产品，以避免造成机器故障及危险。
- 请勿使用酸性清洁剂，否则有可能导致产品故障。
- 请至少每周清洁保养一次，疏于保养时，有可能引起故障，请务必定期保养。
- 清洁完毕，请待完全干燥后，再使用本产品。



使用注意事项

- 使用本产品前，请仔细阅读本说明书，安全正确地使用。
- 请小心使用本产品，避免碰撞及摔落。
- 如果您有任何身体上的特殊情况，例如怀孕、肺衰竭、癌症或癫痫等症状，使用前建议咨询您的医师。

胶囊香熏蜡使用注意事项

- 使用时，请勿撕开或破坏透明透气膜，避免加热中的蜡液流出。
- 使用中请勿用手碰触胶囊香熏蜡，以免烫手。
- 请远离儿童及宠物，避免误食。
- 胶囊香熏蜡非食品，请勿食用。
- 使用期间，感觉不舒服或身体不适时，请立即停止使用，并打开窗户使空气流通。
- 胶囊香熏蜡的铝箔碗底部如有变形，易导致加热效果不佳，香味无法扩散；请立即更换新品，以确保正常的扩香效果。

安全注意事项

为了保障使用安全，请务必遵守以下事项：

- 本使用说明书的注意事项，是为了让使用者能安全正确的使用本产品，防止对使用者或他人造成危害及财产损失。
- 警告事项均为有关安全方面的重要内容，请务必遵守。



- 万一出现冒烟、异味、杂音等异常现象时，仍继续使用的话，可能会导致火灾、触电等，请立即将电源移除，停止使用。



- 请勿擅自对本产品进行改造、修理或拆解，否则有可能造成火灾、触电、故障或受伤。



- 本体消耗配件废弃时，请依照各国指示废弃。



- 请依产品规格使用正确电压。
- 产品在长期不使用时，一定要关闭电源，拔下插头，取出加热槽内的胶囊香熏蜡，否则有可能造成触电或故障。
- 在清洁保养之前，电器必须远离电源。
- 电源关闭后，请在香熏蜡完全冷却凝固的状态下，才可取出胶囊香熏蜡及进行清洁保养。
- 万一不小心将香熏蜡液滴到机器或地板等物体上，请立即用布擦拭干净；如不做处理，有可能导致外观部分褪色。



- 当电源线或插头破损时，或是产品不小心于摔落或受到撞击而受损或破裂时，不得继续使用本产品，否则有可能造成触电、短路等问题。
- 请勿用湿手操作本产品，或让水等其他液体沾附、溅洒到上面，否则有可能造成触电受伤。
- 在加热槽内没有胶囊香熏蜡的情况下，请勿将电源接通，否则可能导致产品故障。
- 使用过程中，勿将手指与异物放到加热槽内，否则有可能造成受伤或产品故障。
- 请勿让儿童独自使用，请放在儿童触及不到的地方，否则有可能造成触电、受伤。儿童应当受到监督以确保安全。
- 请勿将本产品放置于以下地方，否则有可能引起火灾、触电、受伤、故障：
 - 阳光直射或高温的环境，并远离火源。
 - 高压物及易燃物周围。
- 请勿将电源线过度弯折、加热或上方放置重物，否则有可能引起火灾或故障。

障碍排除

疑似发生故障时，请在委托维修前确认以下事项：

机器无法工作

- 电源插头未确实插在插座上
→ 请确认电源插头正确的安插到插座上。
- 主体开关未正确开启
→ 请确认主体开关是否正确开启。

香味散发效果不佳

- 胶囊香熏蜡香味变淡，或透气膜有破损
→ 请更换新的胶囊香熏蜡。
- 加热槽过于脏污
→ 请依照本说明书的清洁保养规范进行保养。

舍宁豪室（上海）贸易有限公司
地址：上海市徐汇区斜土路1223号701室
电话：021-51712999
邮箱：service@serenehouse.com.cn

2015年第一版

如出现其它故障请登录舍宁豪室官方网站 www.serenehouse.com 的支持服务专区查阅使用说明，或请与经销商联系，请勿动手拆解或维修本产品。

产品规格

- 扩香效果会因空间通风度、温湿度及空间大小而有所变化。

圆顶

产品型号： 141501016 气质白 / 141501021 沉稳黑
141501026 优雅灰 / 141501031 蜜桃粉

建议使用空间： 15 ~ 35 米²

电源输入： AC 220 V ~, 50 Hz, 8 W

产品尺寸： 直径 12.8 x 高 10.4 厘米

产品重量： 581.5g ± 5%

运作模式： 连续模式

配件： 保修卡

设计师： Cheng-Yen Chou

设计监制： Carsten Jörgensen

设计： 中国台湾地区

产地： 中国 / 广东 / 东莞

弧线

产品型号： 141501036 气质白 / 141501041 沉稳黑
141501046 优雅灰 / 141501051 蜜桃粉

建议使用空间： 15 ~ 35 米²

电源输入： AC 220 V ~, 50 Hz, 8 W

产品尺寸： 直径 12.3 x 高 11.8 厘米

产品重量： 644.5 g ± 5%

运作模式： 连续模式

配件： 保修卡

设计师： Cheng-Yen Chou

设计监制： Carsten Jörgensen

设计： 中国台湾地区

产地： 中国 / 广东 / 东莞

多国专利商品

IMPORTANT SAFETY INSTRUCTIONS
INSTRUCTION PERTAINING TO A RISK OF FIRE,
ELECTRIC SHOCK OR INJURY TO PERSONS



When using electric products, basic precautions should always be followed, including the following:

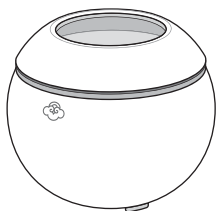
- A.** Read all instructions before using the product.
- B.** The appliance has hot surfaces to evaporate the active ingredients and these surfaces should not be touched during use.
- C.** This appliance can be used by children aged from 8 years and above and persons with reduced physical, sensory or mental capabilities or lack of experience and knowledge if they have been given supervision or instruction concerning use of the appliance in a safe way and understand the hazards involved. Children shall not play with the appliance. Cleaning and user maintenance shall not be made by children without supervision.
- D.** Do not use the appliance when the power cord was damaged.
- E.** Failure to follow instructions could result in a fire hazard. The appliance is only to be used with the Serene Pod[®]. The use of other substances may give rise to a toxic or fire risk. Do not immerse this appliance in water. This appliance is for household use only.

FOR ADULT USE ONLY. THIS IS NOT A TOY AND IS NOT INTENDED FOR USE BY CHILDREN. KEEP OUT OF REACH OF CHILDREN.

Please read this manual carefully before using the product. After reading this manual, please keep it in a readily accessible place.

Serene Pod® Scent Diffuser

- This instruction is suitable for both Dome and Oval.



Dome

A round and grounded geometric form inspired by a dome-like auditorium. Dome delivers full warmth when the Serene Pod® scent melts and diffuses from within it and slowly into your space.

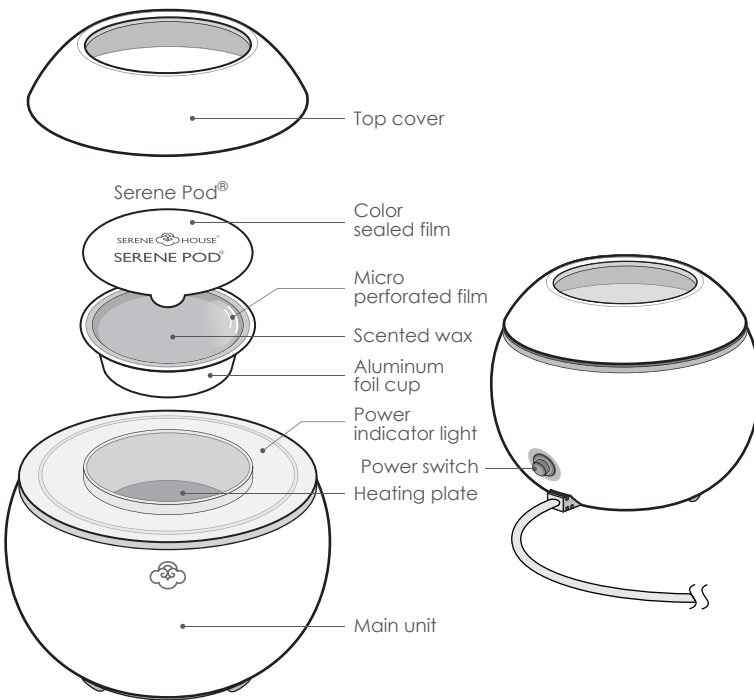


Oval

Curves in architectural design need meticulous calculation, same goes to the elliptical form of Oval when designed. Let its curves blend into your room and fill your environment with scents.



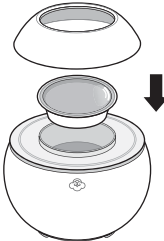
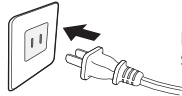

Product & Accessories

- Serene Pod® is required to be used with this product. Serene Pod® is sold separately.



Operating Instructions

- Please remove all packaging before use.

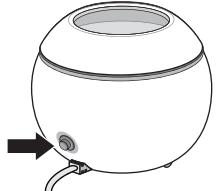
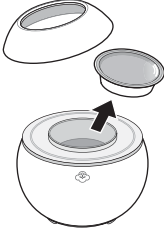
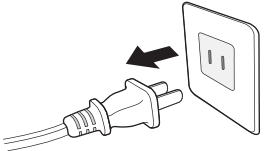
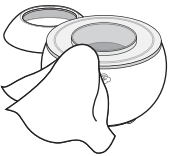
<p>1</p>  <p>Peel away the color film seal only on the Serene Pod®. Do not remove the transparent micro perforated film on the inner layer.</p>	<p>3</p>  <p>Place the top cover back onto the main unit.</p>
<p>2</p>  <p>Place Serene Pod® onto the heating plate.</p>	<p>4</p>  <p>Plug into power source.</p>
<p>5</p>  <p>Turn on the power switch.</p>	

Caution:

1. Only Serene Pod® from SERENE HOUSE can be used with this product; do not heat liquids or other objects in the heating plate.
2. Serene Pod® can be heated repeatedly. If the scent fades or the diffusing performance drops, please consider replacing the Serene Pod®. The Serene Pod® is a consumable item; please contact your local distributor for purchase.
3. Do not move or touch when this product is in use. Allow the wax inside Serene Pod® to cool thoroughly into a solid form before handling the device or Serene Pod®.
4. Unplug from power source when not in use.
5. Always place this wax warmer on a firm, flat and level surface.

Cleaning & Maintenance

- Always disconnect the product from its power source prior to cleaning & maintenance.
- Never soak or wash this product directly as it may cause mechanical malfunction or danger.
- Never use acidic cleansing agents as it may cause malfunction to the product.
- Please perform cleaning & maintenance at least once a week; failing to do so may cause the product to malfunction. Please maintain it on a regular basis.

<p>1</p>  <p>Turn off the power switch.</p>	<p>3</p>  <p>Remove Serene Pod®.</p>
<p>2</p>  <p>unplug from power source.</p>	<p>4</p>  <p>Please use a damp cloth moistened with warm water and neutral cleaning agents to clean the heating plate until it is clean. Place the Serene Pod® back onto the heating plate and Place back the top cover. This completes the cleaning and maintenance process.</p>

Precautions for Use

- Please read all instructions before using the product. Use it safely and correctly.
- Be sure to handle this product with care to avoid impacts or drops.
- If you have any special physical conditions, such as pregnancy, lung failure, cancer, epilepsy, or other illnesses, please consult your doctor before use.

Precautions for Use of Serene Pod®

- Do not remove or damage the transparent micro perforated film of the Serene Pod® in order to avoid spillage of melted scented wax.
- Please do not touch Serene Pod® when it is being heated to avoid accidental burns.
- Please keep children and pets away from Serene Pod® to prevent accidental ingestion.
- Serene Pod® is not edible; please do not eat it.
- Stop using the product and open the windows for ventilation if you start to feel uncomfortable.
- Replace with a new Serene Pod® to ensure best scent ability if the aluminum foil cup of Serene Pod® is deformed in any way (including the bottom).

Safety Precautions

Make sure to follow the instructions below to ensure safe usage:

- The precautions listed in this manual are to ensure safe and proper use of this product by the user, and to avoid any danger or loss that might occur to the user or others.
- "WARNING" contains important safety instructions. Be sure to follow these instructions.



- Stop using the product immediately and unplug the AC adapter once smoke, smell, unusual sounds or other anomalies occur.



- Do not modify, fix, or dismantle this product, as fire, electric shock, damage or injuries may occur.



- When the product is at the end of its life, we recommend disposal at a collection point for the recycling of electrical and electronic equipment, rather than with household waste. The symbols on the product, instruction manual and packaging allow for proper sorting and disposal.



- Please use the proper voltage as required by the product.
- When this product is not used for long periods of time, make sure to unplug it from the power source and remove Serene Pod® from the heating plate; failure to do so may result in electric shocks or malfunction.
- The product must be disconnected from the power source prior to cleaning and maintenance.
- Once all power sources are disconnected, allow Serene Pod® to cool thoroughly into a solid form before handling, cleaning and maintenance.
- If the liquid wax accidentally dripped onto objects such as the device or the floor, wipe clean with a damp cloth immediately to avoid discoloration of the exterior of the product or the furniture.



- Do not use the product when cord or plug is damaged or the product has been accidentally hit, dropped, broken or damaged in any way as such actions may cause problems such as electrical shocks or short circuiting.
- Do not operate this product with wet hands, or allow water or other liquids to drip or spill onto the product as these may cause electric shock or injuries.
- Do not power on the device when there is no Serene Pod® in the heating plate, doing so may cause the product to malfunction.
- Do not put your finger or any other objects into the heating plate while the product is in use, doing so may cause personal injuries or product malfunction.
- This product is not a toy. Do not let children use this product. Keep out of reach of children as electric shock and injury may occur. Children should be supervised to ensure that they do not play with the product.
- To avoid fire, electric shock, personal injuries or product damage, do not place the product in the areas listed below :
 - Under direct sunlight or high temperature environments, and keep away from fire sources
 - Places with high pressures or around combustible objects.
- Do not bend, heat, or place heavy objects on the power cord as fire or malfunction may occur.

Troubleshooting

When the product is suspected of malfunctioning, please confirm the following items before sending it in for maintenance :

Machine does not operate

- Plug is not properly inserted into the power source
→ Please make sure that plug is properly inserted into the power source.
- The power switch is not properly switched on
→ Please check and make sure the power switch is properly switched on.

Poor Fragrance Emission

- The scent fades or the transparent micro perforated film is damaged
→ Please replace the Serene Pod® with a new one.
- The heating plate is dirty
→ Perform maintenance according to the Cleaning & Maintenance section of this manual.

Do not attempt to dismantle or repair the product by yourself. If the unit still does not operate satisfactorily, please visit our website www.serenehouse.com, and click link "Support", or contact our customer service.

Specifications

- Fragrance results may vary depending on ventilation, temperature, humidity, and the size of space.

Dome

Model code:	141501016 White / 141501021 Black 141501026 Gray / 141501031 Pink
Suggested room size:	15 ~ 35 m ² (161.4 ~ 376.6 sq ft)
Power input:	AC 220 V , 50 Hz , 8 W
Product size:	Ø 12.8 cm x 10.4 cm H (Ø 5.0 in x 4.1 in H)
Main unit weight:	581.5 g ± 5 % (20.5 oz)
Operation mode:	Continuous mode
Accessories included:	Warranty card
Designer:	Cheng-Yen Chou
Design supervised by:	Carsten Jörgensen
Design:	Taiwan
Made in China	

Oval

Model code:	141501036 White / 141501041 Black 141501046 Gray / 141501051 Pink
Suggested room size:	15 ~ 35 m ² (161.4 ~ 376.6 sq ft)
Power input:	AC 220 V , 50 Hz , 8 W
Product size:	Ø 12.3 cm x 11.8 cm H (Ø 4.8 in x 4.6 in H)
Main unit weight:	644.5 g ± 5 % (22.7 oz)
Operation mode:	Continuous mode
Accessories included:	Warranty card
Designer:	Cheng-Yen Chou
Design supervised by:	Carsten Jörgensen
Design:	Taiwan
Made in China	

Patented Product