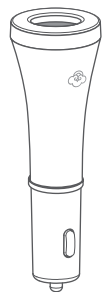


Car Scent Diffuser

- This instruction is suitable for both Sparkler and Stellar.



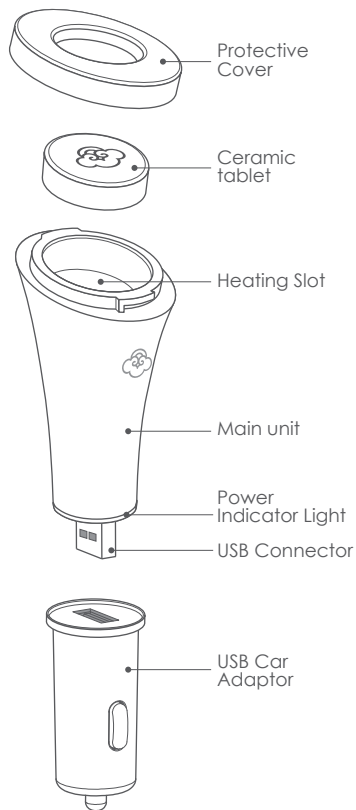
Sparkler



Stellar

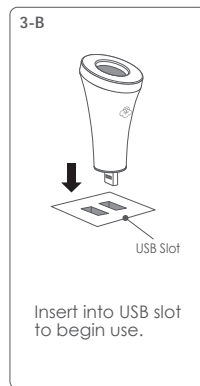
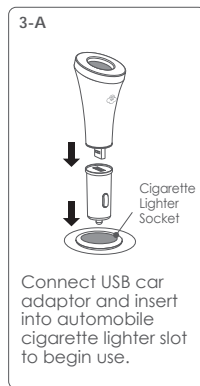
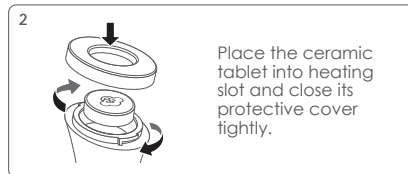
Our engineering team has collaborated with Swiss designer Peter Wirz to develop this groundbreaking new scent diffuser, which can easily fill car space with refreshing fragrances.

Product & Accessories



Operating Instructions

- Please remove all packaging before use.

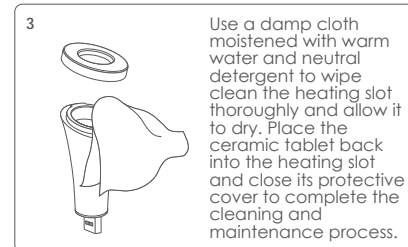
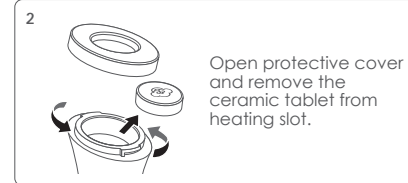
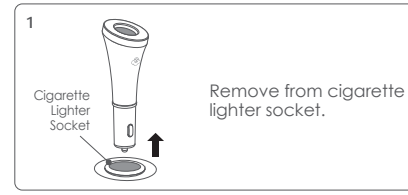


Caution:

1. Use the ceramic tablet included with your purchase. For best result, we recommend that you use SERENE HOUSE natural essential oil with this scent diffuser.
2. Always unplug the product from cigarette lighter or USB slot when not in use.

Cleaning & Maintenance

- Always unplug the product from its power source prior to cleaning & maintenance.
- The ceramic tablet is a consumable item and must be replaced with a new ceramic tablet when its absorbance weakens (Ceramic tablet refill packs are sold separately, please visit www.serenehouse.com for more information on the distribution near you).
- Regular cleaning and maintenance is required after each use.



Precautions for Product Cleaning & Maintenance:

- Allow to dry thoroughly before use.
- Never soak or wash this product directly as it may cause mechanical malfunction or danger.
- Never use acidic cleansing agents as it may cause malfunctions to the product.

Specifications

Sparkler

| | |
|------------------------|--|
| Model code : | 121206001 White 121206003 Black |
| Suggested space size : | For use in standard automobiles |
| Power input : | DC 12 V / USB 5 V / 0.6A |
| Product size : | 4.1 cm L x 3.6 cm W x 12.3 cm H (1 5/8" in L x 1 3/8" in W x 4 7/8" in H) |
| Main unit weight : | 50g ± 5% (1.76oz ± 5%) |
| Operation mode : | Thermal Controlled Heating |
| Accessories included : | Ceramic tablet, Warranty card. |
| Designer : | Peter Wirz |
| Design supervised by : | Carsten Jörgensen |
| Design : | Switzerland |
| Made in China | |

Stellar

| | |
|------------------------|--|
| Model code : | 121206002 White 121206004 Black |
| Suggested space size : | For use in standard automobiles |
| Power input : | DC 12 V / USB 5 V / 0.6A |
| Product size : | Ø 3.75 cm x 11.9 cm H (Ø 1 1/2" in x 4 3/4" in H) |
| Main unit weight : | 50g ± 5% (1.76oz ± 5%) |
| Operation mode : | Thermal Controlled Heating |
| Accessories included : | Ceramic tablet, Warranty card. |
| Designer : | Peter Wirz |
| Design supervised by : | Carsten Jörgensen |
| Design : | Switzerland |
| Made in China | |

Patented Product



Precautions for Use:

- Read the instruction manual before using this product.
- Be sure to handle this product with care to avoid impacts or drops.
- If you have any special physical conditions, such as pregnancy, lung failure, cancer, epilepsy, or other illnesses, please consult your doctor before using essential oils. Stop using the product and open the windows for ventilation if you start to feel uncomfortable.

Precautions for Use of Ceramic tablet





- Use of SERENE HOUSE natural essential oils is recommended.
- Be sure to use a different ceramic tablet with each different essential oil.
- Please do not store essential oils in automobiles with high in-car temperatures and sun exposure.
- Essential oils are highly concentrated and should always be handled with care, including the amount for each use.
- Please avoid dripping the essential oil onto the exterior of the product or onto furniture. If essential oil dripping accidentally occurs, wipe off immediately to avoid discoloration of the exterior of the product or the furniture.
- Keep away from children and pets to avoid accidental ingestion.
- The ceramic tablet is not food. Please do not ingest.


Safety Precautions

For safety, please be sure to comply with the following instructions :

- The precautions listed in this manual are to ensure safe and proper use of this product by the user, and to avoid any danger or loss that might occur to the user or others.
- "WARNING" contains important safety instructions. Be sure to follow these instructions.

WARNING

-  • Stop using the product immediately and unplug the device once smoke, smell, unusual sounds or other anomalies occur.
-  • Do not modify, fix, or dismantle this product, as fire, electric shock, or damage may occur.
-  • When the product is at the end of its life, we recommend disposal at a collection point for the recycling of electrical and electronic equipment, rather than with household waste. The symbols on the product, instruction manual and packaging allow for proper sorting and disposal.
-  • When this product remains unused for a long period of time, the main unit must be unplugged from the cigarette lighter socket or USB slot and the ceramic tablet removed. Otherwise electric shock malfunction may occur.
- This product must be disconnected from the power sources before cleaning and maintenance.
- After the power source is removed from the main unit, only remove the ceramic tablet for cleaning and maintenance after it has cooled completely.
- Please avoid dripping the essential oil onto the exterior of the product or onto furniture. If essential oil dripping accidentally occurs, wipe off immediately to avoid discoloration of the exterior of the product or the furniture.

-  • Discontinue use if the car adaptor or USB connector is damaged or the product is damaged or ruptured due to impact from an accidental drop. Otherwise, electric shock, short circuit, etc. problems may occur.
- When the heating slot does not contain a ceramic tablet, please do not connect a power source. Otherwise product malfunction may occur.
- Do not handle the main unit and outlet with wet hands, or let water or other liquids spill onto them, as this may result in electric shocks.
- Do not touch or insert other foreign objects into the heating slot during use. Otherwise injury or product malfunction may occur.
- This product is not a toy. Do not let children use this product. Keep out of reach of children as electric shock and injury may occur. Children should be properly supervised to ensure that they will not play with this product at all times.
- To avoid fire, electric shock, injury or damage, do not place the product in the areas listed below :
 - Environments exposed to direct sunlight to high temperatures, and keep away from sources of ignition.
 - Pressurized objects and combustibles.

Troubleshooting

If you experienced unsatisfactory operations, please follow our troubleshooting guidelines listed below.

Machine does not operate

- Main unit is not securely connected to USB car adaptor
 - Please ensure USB car adaptor is correctly installed onto the main unit.
- USB car adaptor is not securely connected to the automobile cigarette lighter
 - Please ensure USB car adaptor is correctly inserted into the automobile cigarette lighter.
- Main unit and USB car adaptor have been securely connected but product still does not function properly
 - Please ensure the correct function of the automobile cigarette lighter.

Poor Fragrance Emission

- Using other brands of essential oils
 - For best performance, we recommend using SERENE HOUSE essential oils.
- Too little essential oil in the ceramic tablet
 - Consider adding more oil according to personal preference.
- The ceramic tablet cannot absorb the essential oil
 - Please replace with a new ceramic tablet.
- Heating slot is dirty
 - Perform maintenance according to the "Cleaning & Maintenance" section of this manual.

Do not attempt to dismantle or repair the product by yourself. If the unit still does not operate satisfactorily, please visit our website www.serenehouse.com, and click link "Support", or contact our customer service.

SERENE  HOUSE®

Instruction Manual



Car Scent Diffuser

Stellar • Sparkler