

SERENE  HOUSE®

www.serenehouse.com

00020170504

SERENE  HOUSE®

操作使用說明書



香氛霧化機
流水 Fountain

TW

Table of Contents

繁中 使用說明書 03

流水 香氛霧化機

產品與配件介紹 04 / 使用說明 05 / 燈光模式設定 08 / 時間模式設定 09

清潔保養 10 / 使用注意事項 11 / 安全注意事項 12 / 障礙排除 14

產品規格 15 / 服務保證書 16

EN Instruction Manual 17

Fountain Aroma Diffuser

Product & Accessories 18 / Operating Instructions 19

Light Setting Instruction 22 / Time Setting Instruction 23

Cleaning & Maintenance 24 / Precautions before use 25

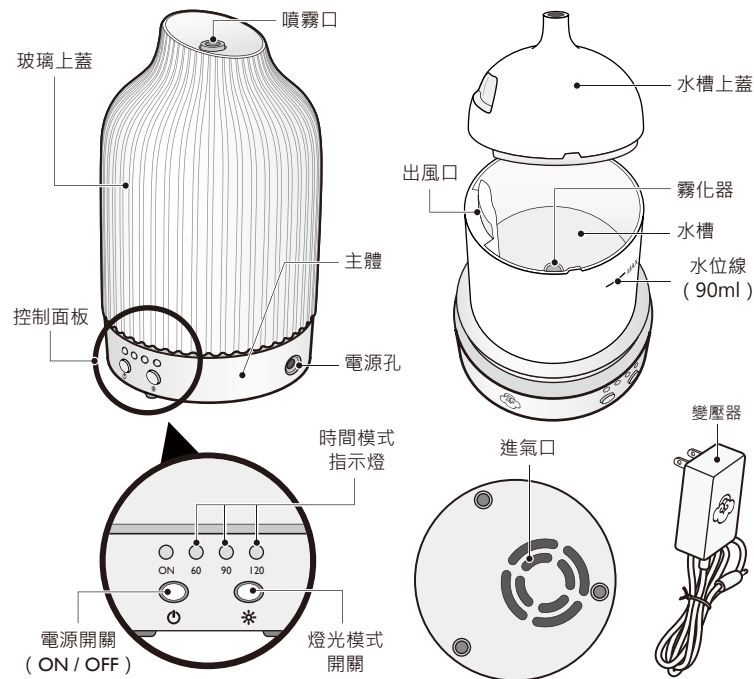
Safety Precautions 26 / Troubleshooting 28

Specifications 29 / Limited warranty 30

在使用本產品之前，請務必詳閱
本使用說明書！
詳細閱讀說明書後，請保存於可
隨時取用之處。

產品與配件介紹

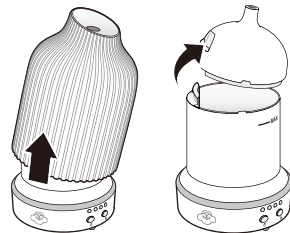
- 使用前，請確認以下物品是否齊全，有無破損情況。



使用說明

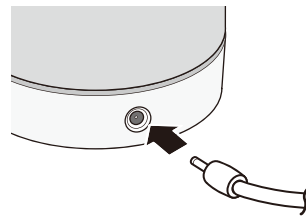
- 請在穩固、平坦、水平的地方使用本產品。
- 若室內環境濕度較高，在使用香氛霧化機時，易在機器周圍產生水氣。

1



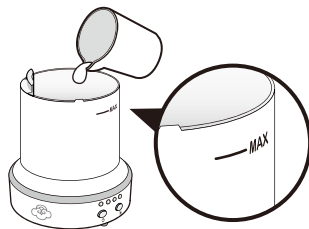
請將玻璃上蓋依圖示往上取下，再將水槽上蓋打開。

2



將變壓器接頭插入主體上的電源孔。

3



將水緩慢注入水槽，為防止機器受損，請勿超過水位線，並避免讓水流入出風口。

- 請務必使用自來水或礦泉水，若使用純水、蒸餾水或其他液體，將不易產生霧氣。
- 請使用溫度在 25°C 到 40°C 的水。如使用低於 5°C 的水，香氛機所需啟動時間較久，(此為正常情況)。
- 加水步驟完成後，請將水槽外多餘的水分擦拭乾淨。

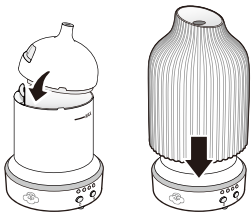
備註：水質建議

4



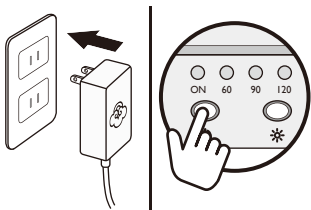
- 將5~10滴（依個人喜好調整）的 SERENE HOUSE 100% 天然香薰精油滴入水槽內，再將水槽上蓋依定位口方向位置裝回。
- 請注意不要讓精油滴到水槽外，如不慎滴出水槽，請立即擦拭乾淨。
 - 請務必掀蓋後再加入水和精油，切勿從任何風口加入。

5



- 請將水槽上蓋和玻璃上蓋依圖示方向裝回並且蓋緊。
- 請注意水槽上蓋安裝時有方向性，如未依照圖示則無法正確安裝。
 - 請注意水槽上蓋和玻璃上蓋未確實蓋緊有可能導致無法霧化或霧化效果不佳。

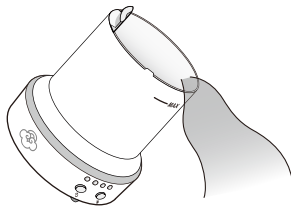
6



- 先將變壓器插入電源插座後，再按下電源開關，電源指示燈與情境燈亮起，機器開始運作。
- 如欲關閉機器，請長按電源開關即可，電源指示燈隨之熄滅。
 - 使用中如欲關閉情境燈，請長按燈光模式開關即可關閉。
 - 基於安全因素，當水量低於安全水位時，香氛霧化機將自動停止斷電。

6

7



- 再次使用時，如水槽內仍有殘餘水分，請將水槽內的水倒掉後重複 1 ~ 6 步驟（請務必進行定期保養）。
- 正確的操作與保養方式，請按照本說明書「清潔保養」步驟所規定方法實施。

注意

- 請勿在未裝玻璃上蓋與水槽上蓋的情況下將電源接通。
- 運轉過程中，請勿取下上蓋，或者堵塞主體下方風扇進氣口。
- 在機器運轉過程中，且水槽內有水時，請勿在電源尚未關閉前打開上蓋，或將手放到水槽內，否則有可能造成機器漏水、故障或人員受傷。
- 水槽內殘留的水如果超過24小時，請務必倒掉並進行清潔保養步驟。
- 建議使用 SERENE HOUSE 100 % 天然香薰精油，切勿使用含有香水、香精或含雜質的精油，以免傷害霧化器裝置。
- 精油若不慎滴到水槽外側或地板等周圍物體上，請立即用布擦拭乾淨。

備註：水質建議

建議使用軟水或礦泉水來搭SERENE HOUSE 香氛霧化機。請注意不要使用蒸餾水或純水，因為水中的礦物質已經被過濾，進而影響機器霧化效果，不易產生霧氣。

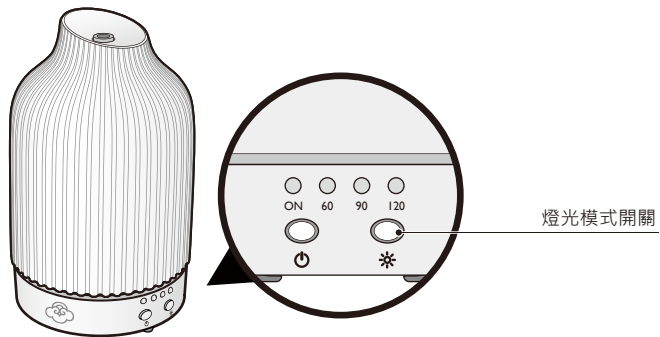
逆滲透(RO)水也只含有微量的礦物質，會造成機器霧化效果不佳，不易產生霧氣。

不建議使用硬水。因為硬水中的碳酸鈣會沉澱堆積，每次使用完後都必須清理震盪器。此外，硬水分子太重，無法有效的產生霧化效果。

7

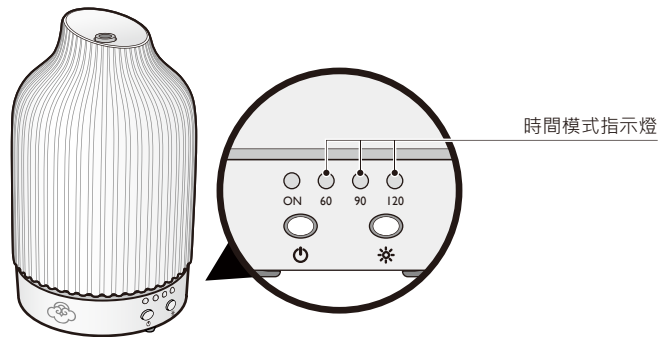
燈光模式設定

1. 按下電源開關，電源指示燈與情境燈亮起。
2. 內建七彩情境燈效果：暖白光、綠光、藍光、紅光、黃光、紫光、白光。
3. 七彩情境燈要切換為單色顯示燈，請按壓燈光設定鈕即可。
4. 使用中如欲關閉情境燈，請長按燈光模式開關，或重覆按壓燈光模式開關至七彩情境燈輪替顯示完，情境燈即關閉。



時間模式設定

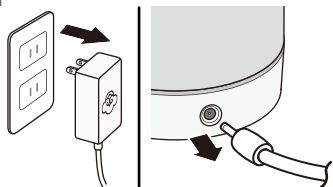
1. 按下電源開關，啟動機器連續運作模式（時間模式指示燈未亮）。
2. 按第一下電源開關，60分鐘燈號亮起，機器自此運轉60分鐘後即自動停止運作。
3. 按第二下電源開關，90分鐘燈號亮起，機器自此運轉90分鐘後即自動停止運作。
4. 按第三下電源開關，120分鐘燈號亮起，機器自此運轉120分鐘後即自動停止運作。
5. 按第四下電源開關，機器隨即關閉。
 - 機器於時間模式下使用時，如遇水量不足，機器會自動斷電。



清潔保養

- 在每次清潔保養前，請務必先將電源拔除。
- 建議每次使用完畢即進行清潔保養，以確保機器正常運作。

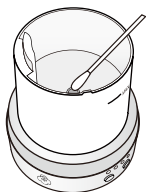
1



請先拔除插座上的變壓器，再拔除主體上的變壓器接頭。

- 為避免水槽內液體流出，移除變壓器插頭時請保持機體垂直。

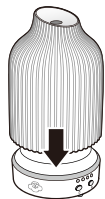
2



取下水槽上蓋，倒掉水槽中的水並加入適量溫水（水溫請勿超過40°C）。

將少許中性清潔劑滴入水槽內，並使用乾淨棉棒輕拭水槽內部及霧化器表面，待清洗完畢後使用乾淨的布將機器擦乾即可。

3



將上蓋裝回機器，清潔保養步驟完成。

- 請勿使用酸性清潔劑，否則有可能導致機器損壞。
- 於清潔保養時，請慎防進氣口、出風口或按鍵開關部位進水導致機器故障。若水不慎進入機器本體，請靜置至少6小時，待主體內部完全乾燥後，方可繼續使用。

使用注意事項

- 使用本產品前，請仔細閱讀本說明書，安全正確地使用。
- 本產品為香氛霧化機，使用超音波震盪產生芬芳霧氣，同時具有LED情境燈光。
- 使用時，請務必閱讀本說明書的「使用說明」確保正確操作，若使用方法不當有可能引起故障。
- 保養時，請務必閱讀本說明書的「清潔保養」，如保養方法不當，有可能引起故障。
- 本產品是採用超音波霧化原理達到擴香效果，以擴香效果為主，雖未達加濕機標準，但可降低環境乾燥度。

香薰精油的使用注意事項

為達到最佳效果，建議使用 SERENE HOUSE 100% 的天然香薰精油；切勿使用含有香水、香精或含雜質的精油，以免傷害霧化器裝置。

- 精油屬於濃縮的高純度油，使用時請特別小心。
- 精油有可能溶解塑膠或傢俱的塗裝，請注意不要灑落。
- 幼童與寵物對香味非常敏感，在密閉空間內使用時，請特別小心。
- 如使用期間感覺不舒服或身體不適時，請立即停止使用，並打開窗戶使空氣流通。
- 請依個人喜好斟酌使用精油用量。
- 如您有任何身體上特殊的狀況，例如懷孕、肺衰竭、癌症或癲癇等症狀，使用精油前建議請先諮詢您的醫師。

安全注意事項

為了保障使用安全，請務必遵守以下事項：

- 本使用說明書的注意事項，是為了讓使用者能安全正確的使用本產品，防止對使用者或他人造成危害及財產損失。
- 警告事項均為有關安全方面的重要內容，請務必遵守。



警告



- 如出現冒煙、異味、雜音等異常現象時，如繼續使用可能會導致火災、觸電等，請立即將變壓器由電源插座上取下，停止使用。



- 請勿擅自對本產品進行改造、修理或拆解，否則有可能造成火災、觸電、故障或受傷。



- 主體消耗配件廢棄時，請依照各國指示廢棄。



- 請使用DC24V / 500mA規格之變壓器，否則將導致機器故障。
- 當機器運作時，變壓器會發熱，乃屬正常現象。
- 請使用本產品所附的變壓器，如使用它牌變壓器，有可能會引發機器故障或火災。
- 於安裝時請勿連接變壓器，否則有可能造成人員觸電或受傷。
- 本產品於長期不使用或移動時，請務必關閉電源並將變壓器拔除。請倒掉容器內的水，否則有可能造成產品故障。
- 拔下變壓器時，請勿扯住電線，必須牢牢地緊握變壓器後再進行拔除，否則有可能造成變壓器破損或人員受傷。
- 請慎防精油沾附於產品外側或傢俱上，若不慎發生，請立即擦拭，以避免產品外觀或傢俱褪色。



- 清潔保養前，請務必先將產品的電源切斷。
- 請勿用沾濕的手操作機器與變壓器，或讓水與其他液體等沾附、灑灑到上面，以免造成人員觸電或受傷。
- 當電源線或插頭破損時，請勿使用，否則有可能導致機器短路、故障。
- 當產品摔或落受到撞擊造成受損或破裂時，請勿使用，否則有可能導致機器短路、故障。
- 請勿將電源線過度彎折，加熱或讓重物放置上面，否則有可能引起火災或故障。
- 請勿故意將眼口鼻靠近出霧口所排出的香氛霧氣，否則有可能造成身體不適。
- 請勿讓幼童獨自使用，要放在幼童觸及不到的地方，否則有可能造成受傷，兒童應當受到監督以確保其不會碰觸到機器。
- 除非有負責安全的人士給予產品使用的督導和指示，本產品不適合由身體、感官或精神能力欠佳的人士（包括兒童），或缺乏經驗及知識的人士使用。
- 請勿放置在以下地方，否則有可能引起火災、觸電、人員受傷或產品故障：
 - * 陽光直射的地方或取暖器具旁邊。
 - * 灰塵多的地方。
 - * 傾斜或晃動等不穩的地方。
 - * 瓦斯爐旁或有油煙的地方等。
 - * 環境溫度 40°C 以上的地方，並遠離火源。
 - * 電器產品（電視機、音箱設備、電冰箱等）的上面或旁邊。
- 請勿置放於地毯等柔軟的地方，否則會堵塞底部的進氣口，造成機器無法正常運作。
- 產品使用過程中，請勿在電源尚未關閉前打開上蓋，或將手或異物等放到水槽內，否則有可能造成機器漏水、故障或人員受傷。

障礙排除

當機器疑似故障時，請在委託維修前確認以下事項：

機器無法運作

- 變壓器未確實插在插座上
→ 請確認變壓器是否正確的安插到插座上。
- 變壓器的電源線未正確的接上主體的電源孔
→ 請確認變壓器的電源線是否正確的接上主體的電源孔。
- 電源已正確接上，但仍然不會運作
→ 請先確認水槽是否有水，然後再確認電源開關是否開啟。或確認是否超過安全水位 (MAX)，如超出，請將超出水量倒出水槽外。

無法霧化或霧化效果不佳

- 水溫太低
→ 請使用溫度在25°C到40°C的自來水或礦泉水。
- 使用了純水或蒸餾水
→ 請使用自來水或礦泉水 (某些地區的水質容易造成水垢，請將水過濾後再使用)。
- 霧化器髒汙
→ 請依照本說明書的「清潔保養」方法進行保養。
- 機器放置在地毯等柔軟物體上，或者使用場所的風量過大
→ 請在水平、平穩及風量小的場所使用。
- 水槽內水位超過水位線上限 (MAX)
→ 請將多餘的清水倒掉。
- 上蓋未確實與主體蓋緊
→ 請依照本說明書的「使用說明」步驟重新蓋緊上蓋。

其它障礙排除請上 www.serenehouse.com 的 Support 專區或請與經銷商聯繫，請勿動手拆解或維修產品。服務專線：(02)77218848

產品規格

- 擴香效果會因空間通風度、溫濕度及空間大小而有所變化。

香氛霧化機 — 流水

型號：	161201021 白色 / 161201022 茶灰色
霧化模式：	超音波震盪
連續使用時間：	≥ 4 小時
建議使用空間：	10~15 平方公尺
頻率 (MHz)：	2.4 ± 10%
水槽容量：	90 毫升
燈光顏色：	七彩
電源輸入：	DC 24V
消耗功率：	10W
產品尺寸：	直徑 9 x 高 15.1 公分
產品重量：	550 公克
運作模式：	連續霧化 (可定時60 / 90 / 120分鐘)
配件：	變壓器 / 說明書 / 保證卡
設計：	SERENE HOUSE
中國製造	



RoHS
compliant



多國專利商品

服務保證書



親愛的顧客您好:

為確保您的權益，請妥善保管本服務保證書（遺失恕不補發），如需服務時請出示本保證書，依照下列刊載之內容，保證提供免費維修。

- 顧客依照使用說明書、機器上所貼標籤等的注意事項，於正常使用情況下，在保固期間內發生故障時，請帶著商品與本保證書，即可委託原購買門市代為修理。此屬免費修理。
- 若出現下列情況，雖在保固期限內仍須採取額外報價付費修理：
 - 錯誤使用方式或不當的修理與改造所造成的故障或損傷。
 - 火災、損害、煤氣或天然氣爆炸、地震、風災、水災、打雷、電壓異常及其他天災或不可抗外力因素所造成的故障及損壞。
 - 保證書上未註明顧客姓名、購買日期及購買門市，或是保證書內容經人為塗改時。
 - 使用後的傷痕、變色、汙損及保管不當所造成的損壞。
 - 損耗性零件及配件的更換（如震盪片、清潔刷、音源線、電池、搖控器等）。

顧客資料			
姓名	先生 / 女士	電話	
地址			
E-mail			
商品資訊		門市店章蓋章處 (請務必蓋章，保固方為有效)	
商品名稱			
型號			
生產序號			
購買門市			
購買日期	年	月	日
保固期間	自購買日起12個月 (不含耗材)		

◆ 未蓋門市店章，欄目填寫不清、不實或空白時，本服務保證書無效，請填寫姓名、電話與地址；如未填寫購買日期與加蓋店章，請立即向購買本商品的門市提出填寫要求，本保證書只附贈一次，請務必小心保管，遺失恕不補發。

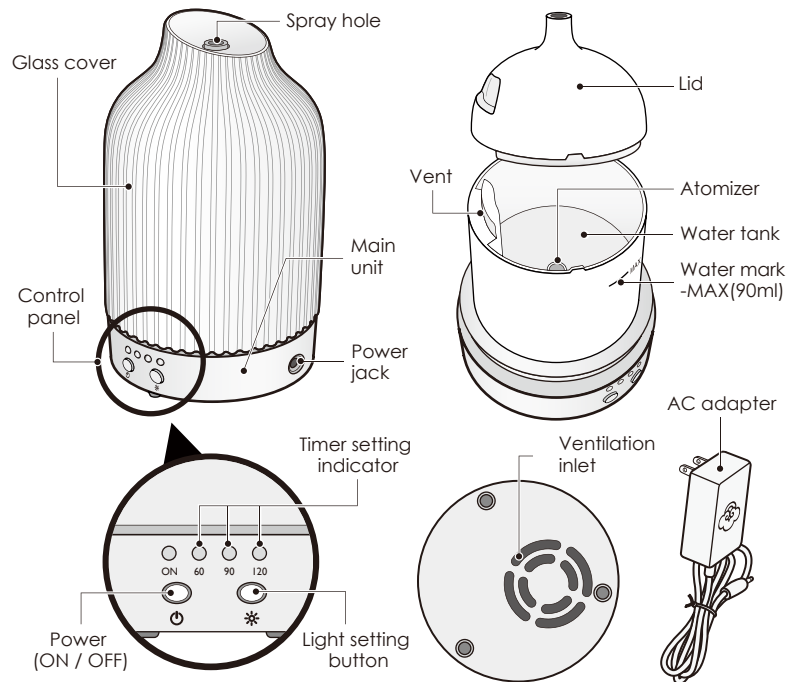
English

17

Please read this manual carefully before using the product. After reading this manual, please keep it in a readily accessible place.

Product & Accessories

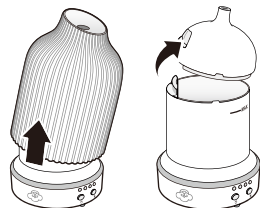
- Please check if all following items are present and if there is any damage before use.



Operating Instructions

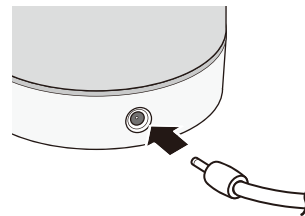
- Always place your Aroma diffuser on a firm, flat and level surface.
- Condensation may occur around the Aroma diffuser when operating in high humidity environment.

1



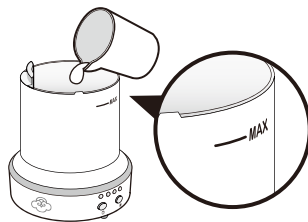
Take off the cover to remove it from the main unit. Remove the lid from water tank.

2



Plug the head of the AC adapter cord into the power jack at the side of the main unit.

3

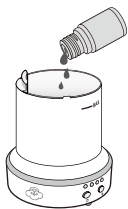


Fill water tank to or below maximum (MAX) water mark level. To avoid damage to this device, never fill water exceeding its maximum water mark level.

- Fill with water.
- After completing the water filling procedure, please wipe off any excess moisture on the water tank.
- Never add water into the vent hole.

Water Recommendations: Note

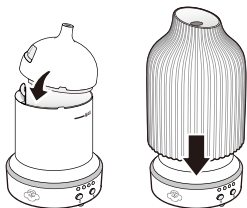
4



Add 5-10 drops of Serene House 100% Essential Oil into the water tank. Cover the tank with lid. Please do not let essential oil drip onto the exterior of Aroma diffuser. If essential oil accidentally drips onto the exterior of the device, wipe clean immediately with a cloth.

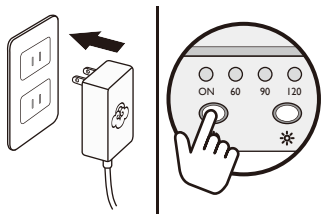
- Never allow water or oil to enter the vent.

5



Put the cover back on main unit. Place the cover back on the main unit, per diagram. If the lid is not correctly aligned, as a safety feature, the unit will not operate

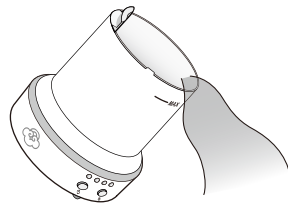
6



Plug AC adapter into a power outlet and press the power button to turn the power on. The built-in LED light and power indicator will be on when the device starts to operate.

- For safety purpose, this Aroma diffuser is programmed to stop operating automatically when it detects the water is below its programmed level.
- To turn off the Aroma diffuser, press the power indicator button for 2 seconds.

7



Please empty the water in the water tank and follow step 1 to 6 when reusing this device.

- For proper handling and maintenance, please refer to the Cleaning & Maintenance section in this manual.

Caution

- Never connect the power without placing the lid and cover on the unit.
- Do not remove the lid or block the ventilation inlet under the main unit during usage.
- When the device is in operation and there is water in water tank, do not touch the atomizer as personal injury or device malfunction may occur.
- After each use, please make sure to pour out any remaining water in tank.
- For best performance, we recommend Serene House 100% pure natural essential oils with this Aroma diffuser. Use of other essential oils may cause damage to the device.
- Make sure to wipe clean with a cloth if oil drips on the main unit or floor.

Water Recommendations: Remark

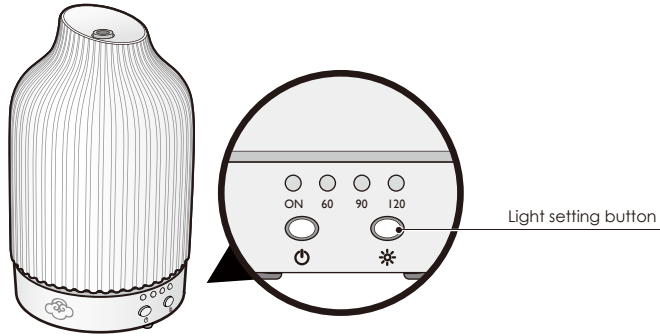
Water Recommendations for Serene House Aroma diffuser
Soft water is best for your Serene House diffuser. You may also use bottled or mineral water. It is important to not use steamed distilled water, as this water had the minerals removed from the water that affects the operation of the diffusers.

Reverse osmosis (RO) water also has less minerals in the water and the diffuser will not be able to diffuse the mist properly and the desired results will not be achieved.

Hard water is also not recommended. This would require that the oscillator be cleaned every time after use when using hard water, because the calcium carbonate from hard water will pile. Also, hard water is too heavy for oscillator to diffuse mist.

Light Setting Instruction

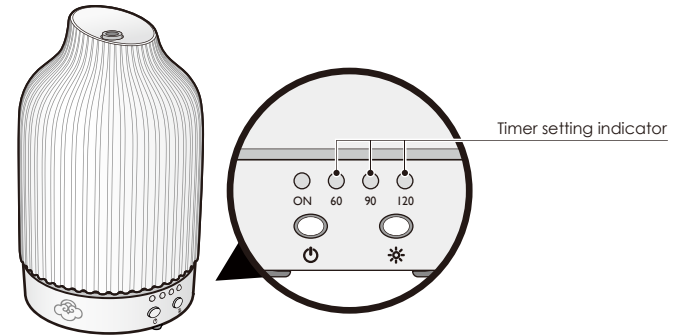
1. To switch on -press the light setting button and the built-in LED light will be on.
2. 7 light color effectiveness - warm white, green, blue, red, yellow, purple and light white.
3. Fix on a single light color - press the light setting button and the light color will be fixed.
4. To switch off the light - keep pressing the light setting button and at the end of 7-light rotating cycle. the light is off.



Time Setting Instruction

To set usage time of this Aroma diffuser

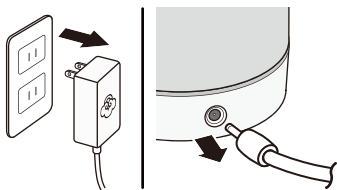
1. Press the power indicator button for continuous operation.
2. Press the power indicator button once for 60 operation. The 60 indicator will go on.
3. Press the power indicator button twice for 90 operation. The 90 indicator will go on.
4. Press the button 3x for 120 operation.
5. For safety purpose, this Aroma diffuser is programmed to stop operating automatically when it detects the water is below its programmed level.



Cleaning & Maintenance

- Always disconnect the AC adapter from the electrical outlet before cleaning.
- For best atomizing performance, be sure to clean the Aroma diffuser after use.

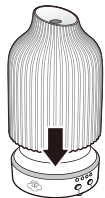
1



Remove the AC adapter from the electrical outlet and then remove the plug from the main unit.

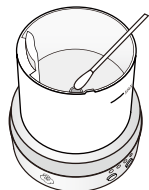
- To avoid liquid spilling from the water tank, always keep the main unit in an upright position whenever removing AC adapter.

3



Reattach the lid to complete the cleaning and maintenance procedure.

2



Remove the lid, empty the water from the tank, add a small amount of warm water (do not exceed 40°C/104°F), and a few drops of neutral cleanser. Use a cotton swab to clean the atomizer and internal surface of the water tank.

Gently rinse all the soap out of the water tank after washing.

- Be careful to not allow water to enter the vent.
- Never use acidic cleansers as this may cause malfunction.
- If water accidentally flows into the ventilation inlet, vent or control buttons, please allow internal mechanism to dry thoroughly (at least 6 hours) before the next use, otherwise this may cause the device to malfunction.

Precautions before use

- Please read all instructions before using the product. Use it safely and correctly.
- This product is a vaporized fragrance diffuser and uses ultrasonic vibration technology to generate fragrant vapors, it also has a LED lighting function.
- Read the "Operating Instructions" section of this manual for correct operation; malfunctions may occur due to improper use.
- Make sure to read and follow the "Cleaning & Maintenance" instructions in this manual for cleaning and maintenance; improper maintenance may cause malfunctions.
- This product is manufactured using the ultrasonic atomization principle, and while it does add slight humidity to the air, its primary purpose is as a fragrance diffuser.

Notes on the use of oils

For best performance of this Aroma diffuser, we recommend using Serene House 100% pure and natural essential oil.

- Essential oils are highly concentrated oils. Use with caution.
- Do not spill the oils as they may damage plastic objects and furniture.
- Children and pets are very sensitive to essential oils. Use with caution.
- Stop using the product and open the windows for ventilation if you start to feel uncomfortable.
- Be sure to use appropriate amounts of essential oil.
- If you have any special physical conditions, such as pregnancy, lung failure, cancer, epilepsy or other illnesses, please consult your doctor before using essential oils.

Safety Precautions

For safety, please be sure to comply with following instructions :

- The precautions listed in this manual are to ensure safe and proper use of this product by the user, and to avoid any danger or loss that might occur to the user or others.
- "WARNING" contains important safety instructions. Be sure to follow these instructions.

WARNING



- Stop using the product immediately and unplug the AC adapter once smoke, smell, unusual sounds or other anomalies occur.



- Do not modify, fix, or dismantle this product, as fire, electric shock, or damage may occur.



- When the product is at the end of its life, we recommend disposal at a collection point for the recycling of electrical and electronic equipment, rather than with household waste. The symbols on the product, instruction manual and packaging allow for proper sorting and disposal.



- KEEP OUT OF REACH OF CHILDREN AND PETS
- FOR INDOOR USE ONLY
- Please use a DC 24V / 500 mA adapter, otherwise the device may malfunction.
- The AC adapter will heat up when the product is operating and it is normal.
- Only the included AC adapter may be used with the product, using other AC adapter may result in fire.
- Do not connect the AC adapter to the main unit when installation, as electric shock and injury may occur.
- The product should always be unplugged and the water tank should always be empty when moving the product or when the product is not in operation.
- When unplugging the AC adapter from the outlet, do not pull on the wire. Hold the AC adapter firmly and then unplug it, or else damage or injury may occur.
- Please avoid dripping the essential oil onto the exterior of the product or onto furniture. If essential oil dripping accidentally occurs, wipe off immediately to avoid discoloration of the exterior of the product or the furniture.



- The product must be disconnected from the electrical outlet before use and maintenance.
- Do not handle the main unit and AC adapter with wet hands, or let water or other liquids stick to or spray onto them, as this may result in an electric shock.
- Do not use the product when electric cord or plug is damaged or the product has been accidentally hit, dropped, broken, or damaged in any way.
- Do not use the product when it has been accidentally dropped, hit, or broken as this may cause the product to short-circuit or malfunction.
- Do not bend, heat, or place heavy objects on the power cord as fire or malfunction may occur.
- Do not deliberately place your eyes, nose or mouth close to the fragrance mist emitted as this may cause physical discomfort.
- This product is not a toy. Do not let children use this product. Keep out of reach of children as electric shock and injury may occur. Children should be properly supervised to ensure that they will not play with this product at all times.
- This product is not intended for use by persons (including children) with reduced physical, sensory, or mental capabilities, or lack of experience and knowledge, unless they have been given supervision or instruction concerning use of the product by a person responsible for their safety.
- To avoid fire, electric shock, personal injury or product damage, do not place the product in the areas listed below:
 - * In direct sunlight or next to a heating apparatus.
 - * In dusty places.
 - * On tilted, unstable or uneven surfaces.
 - * Places full of smoke or next to gas stoves.
 - * Places with an ambient temperature of less than 40°C/104°F; keep the product away from sources of ignition.
 - * On top of or next to electrics (TVs, stereos, refrigerators, etc) .
- Do not place the product on soft surfaces such as carpet, otherwise the ventilation inlet at the bottom may be blocked, causing the device to not function correctly.
- Do not remove the lid or put your finger or other objects into the water tank while the product is in operation as water leakage, malfunction or personal injury may occur.

Troubleshooting

If you experience unsatisfactory operations, please follow our troubleshooting guidelines listed below.

Machine does not operate

- Check the adapter
→ Make sure the adapter is fully and correctly plugged into the electrical outlet.
- Power cord not connected to the main unit
→ Be sure plug is inserted into the body socket correctly.
- The power is correctly connected but the device still does not operate
→ Check whether the water tank contains any water and then recheck that the ON/OFF switch is on. Check that the water level in the tank does not exceed the maximum water level line (MAX); if this is the case, empty out the excess water.

The product does not atomize or does not atomize effectively

- Dirty atomizer
→ Perform maintenance according to the 'Cleaning & Maintenance' section of this manual.
- Placement of the product
→ Place on a firm, level, and stable surface.
- Check the water volume
→ Make sure the water does not exceed its designated water mark level.
- The lid does not attach securely to the main unit
→ Reattach the lid according to the procedure in the 'Operating Instructions' section of this manual.
 - See water types/ recommendations above.

Do not attempt to dismantle or repair the product by yourself. If the unit still does not operate satisfactorily, please visit our website www.serenehouse.com, and click link "Support", or contact our customer service. Service Hotline: 02-77218848

Specifications

- Fragrance results may vary depending on ventilation, temperature, humidity, and the size of space.

Fountain

Model code:	161201021 White / 161201022 Grey
Atomization mode:	Ultrasound
Continuous atomization time:	≥ 4 hr
Suggested room size:	10 ~ 15 m ² (107.6 ~ 161.4 sq ft)
Ultrasonic frequency(MHz):	2.45 ± 10 %
Water tank capacity:	90ml (3 fl. oz.)
Colors of light:	warm white, green, blue, red, yellow, purple, white
Power input:	DC 24V , 10W
Product size:	Ø 9 cm x 15.1 cm H (3 ½" in x 5 ⅞" in H)
Main unit weight:	≈ 550 g
Operation mode:	Continuous mode
Accessories included:	Adapter / Manual / Warranty card
Design team:	SERENE HOUSE
Made in China	



RoHS
compliant



Patented Product

Limited warranty

This product is warranted against defective materials and workmanship. Warranty period is one (1) year from the original purchase. Any defective part will be replaced at no charge if it has not been tampered with and appliance has been use accordingly to our printed instructions.

If you experienced unsatisfactory operations, first follow Troubleshooting and Cleaning & Maintenance instructions. If the unit still does not operate satisfactorily, please call or write to a SERENE HOUSE authorized distributor.

Or you may visit our website as <http://www.serene-house.com/en/support.html> explaining just how the unit is operating. Specify your product name and model number, our distributor will provide further instructions on how to correct the trouble yourself, or will ask you to return the unit for repair or replacement.

This product warranty does not cover damages caused by misuse or abuse, accidents, the attachment of any unauthorized accessory, alteration to the product or any other conditions whatsoever that are beyond the control of SERENE HOUSE. To validate your warranty, please complete all the information in the warranty card below and send it along with your purchase receipt copy to a local SERENEHOUSE distributor via fax or email.

This warranty is issued by SERENEHOUSE INTERNATIONAL ENTERPRISE LTD. and is valid for one (1) year from purchase receipt date.

Customer Information		
Family Name	Given Name	TEL
ADD		
E-Mail		
Product Information		Store Validation Stamp
Product Name		
Model Number		
ID Number		
Store Name		
Purchase Date		

