



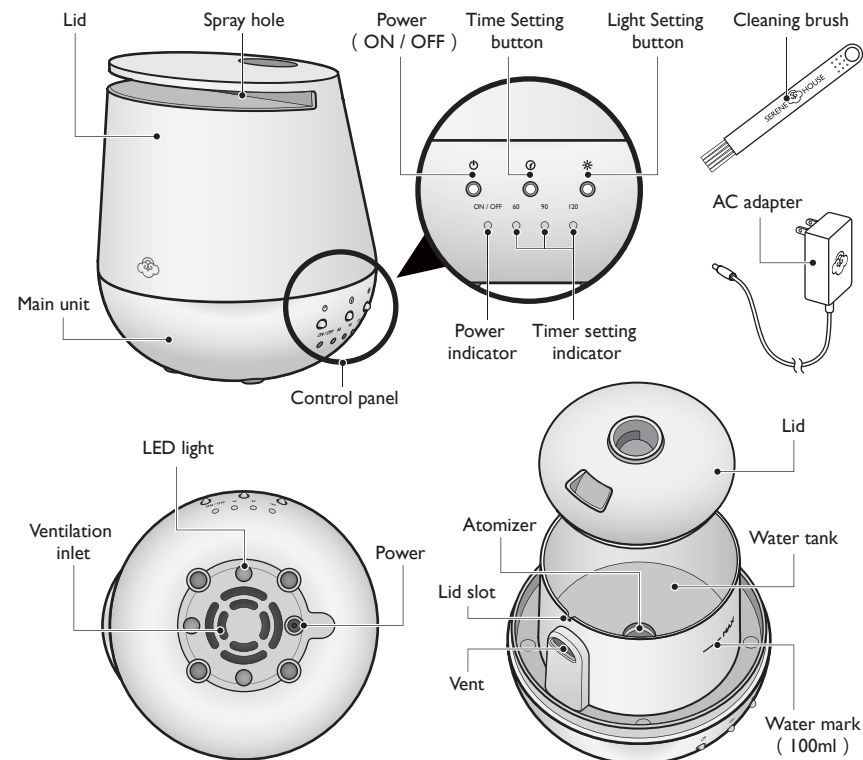
Scent Pot

Scenzilizer®
Design by Carsten Jörgensen

Product & Accessories

Scent Pot Scenzilizer® (121201006 White / 121201007 Black)

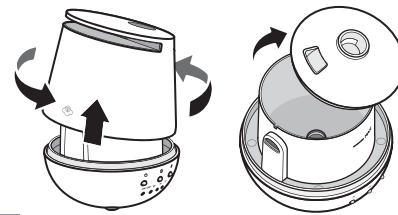
• Please check if all following items are present and if there is any damage before use.



Operating Instructions

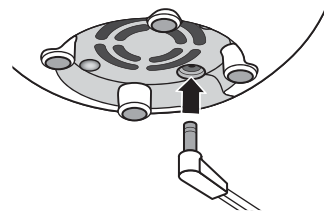
- Always place your Scenzilizer® on a firm, flat, and level surface.
- Condensation may occur around the Scenzilizer® when operating in high humidity environment.

1



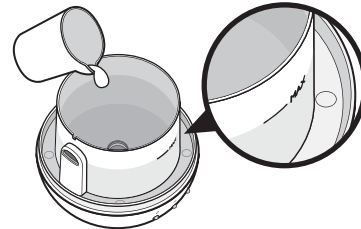
Turn the cover counter clock wise to remove it from the main unit (as show in diagram) Remove the Lid from water tank.

2



Plug the head of the AC adapter into the power jack at the bottom of the main unit.

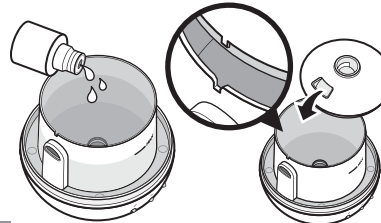
3



Fill water tank to its maximum (MAX) water mark level. To avoid damage to this device, never fill water exceeding its maximum water mark level.

- Use tap water or mineral water.
- Fill with bottled or filtered water up to the water indicator line.
- Water should be in room temperature (25°C ~ 40°C) (76.9°F ~ 103.9°F) . Do not use water below 25°C (76.9°F) .
- After completing the water filling procedure, please wipe up any excess moisture on the sink.
- Never add water into the vent hole.

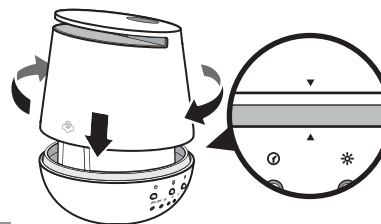
4



Add 5-10 drops of SERENE HOUSE 100% natural essential oil into the water tank. Cover the tank with Lid. Please do not let essential oil drip onto the exterior of Scenzilizer®. If essential oils accidentally dripped onto the exterior of the device, wipe clean immediately with a cloth.

- Never allow water or oil to enter the vent.

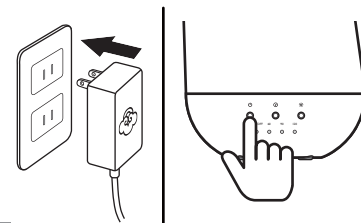
5



Close the cover by match the marking on the cover and main unit. Turn clock wise to Lock in place.

- Please note that the lid must be attached in a certain orientation. It will not be attached correctly if not performed according to the diagram.
- Please note that atomization may fail or be insufficient if the lid is not attached securely.

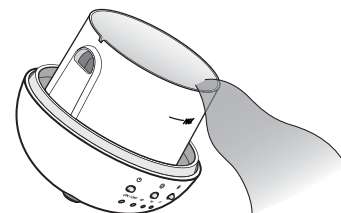
6



Plug the AC adapter into a power outlet and press the power button to turn the power on. The built-in LED light and power indicator will be on when the device starts to operate.

- The built-in LED light can be turned off during use by pressing the light setting button.
- For safety purpose, this Scenzilizer® is programmed to stop operating automatically when it detects the water is below its programmed level.

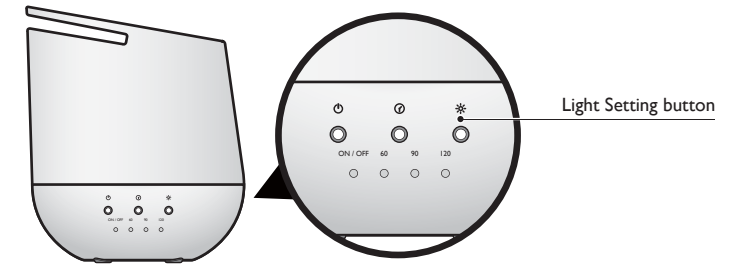
7



Please empty the water in the water tank and follow step 1 to 6 when reuse this device.

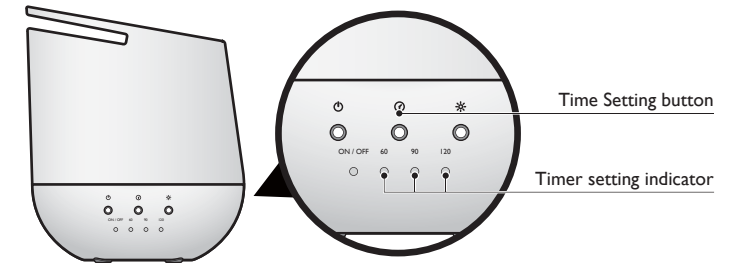
- For proper handling and maintenance, please refer to the Cleaning & Maintenance section this manual.

Light Setting Instruction



1. To Turn On - Press the light setting button and the built-in LED light will light up.
2. To Turn Off - Press the light setting button and the built-in LED light will go off.
3. The built-in LED light can be turned off during use by pressing the light setting button.
4. The light will automatically turned off with the unit when, the water level is low.

Time Setting Instruction



To set the usage time of this Scenzilizer®.

1. Press the time setting button once for 60-minutes operation. The 60 timer indicator will go on.
2. Press the time setting button twice for a 90-minutes operation. The 90 timer indicator will go on.
3. Press the time setting button three times for a 120-minutes operation. The 120 timer indicator will go on.
4. Press the time setting button four times for continuous operation.
5. For safety purpose, this Scenzilizer is programmed to stop operating automatically when it detects the water is below its programmed level.

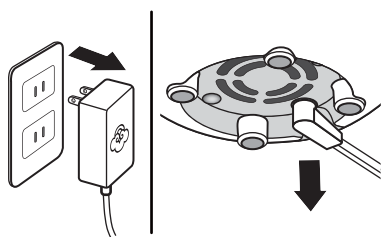
Caution

- NEVER connect the power without covering the lid and the cover.
- Do not remove the lid or block the Ventilation inlet under the main unit during use.
- When the device is in operation and there is water in water tank, do not touch the atomizer as personal injury or device malfunction may occur.
- Make sure to pour out the water that has been using for over 24 hours.
- For best performance, we recommend SERENE HOUSE essential oils with this Scenzilizer®. Use of other essential oils may cause damage to the device.
- Make sure to wipe clean with a cloth if oil drips on the main unit or floor.

Cleaning & Maintenance

- Always disconnect the AC adapter from the electrical outlet before cleaning.
- For best atomizing performance, be sure to clean the Scentilizer® after each use.

1



Remove the AC adapter from the electrical outlet and then remove the plug from the main unit.

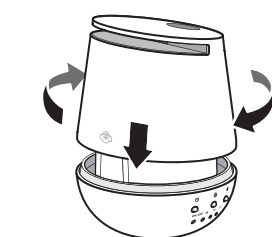
- To avoid liquid spilling from the water tank, always keep the main unit in an upright position whenever removing the AC adapter cable.

2



Remove the lid, empty the water in the tank, add a small amount of warm water (do not exceed 40°C) (103.9°F) , and a few drops of neutral cleanser. Use the cleaning brush provided to clean the atomizer and internal surface of the water tank. Gently rinse all the soap out of the water tank after washing. Do not use dishwashing liquid.

3



Reattach the lid to complete the cleaning and maintenance procedure.

- Never use acidic cleansers as this may cause malfunction.
- If water accidentally flows into the ventilation inlet, vent or control buttons, please allow internal mechanism to dry through (at least 6 hours) before the next use, otherwise this may cause the device to malfunction.

Precautions before use

- Please read all instructions before using the product. Use it safely and correctly.
- This product is a vaporized fragrance diffuser and uses ultrasonic vibration technology to generate fragrant vapors, it also has a LED lighting function.
- Read the **“Operating Instructions”** section of this manual for correct operation; malfunctions may occur due to improper use.
- Make sure to read and follow the **“Cleaning & Maintenance”** instructions in this manual for cleaning and maintenance; improper maintenance may cause malfunctions.
- This product is manufactured using the ultrasonic atomization principle, and can only be used for spreading fragrance, it does slightly humidify but it cannot be used on its own as a humidifier.

Notes on the use of oils

For best performance of this Scentilizer®, we recommend using SERENE HOUSE essential oils.

- Essential oils are highly concentrated oils. Use with caution.
- Do not spill the oils as they may damage plastic objects and furniture.
- Children and pets are very sensitive to essential oils. Use with caution.
- Stop using the product and open the windows for ventilation if you start to feel uncomfortable.
- Be sure to use appropriate amounts of essential oil.
- If you have any special physical conditions, such as pregnancy, lung failure, cancer, epilepsy, or other illnesses, please consult your doctor before using essential oils.

Safety Precautions

For safety, please be sure to comply with following instructions :

- The precautions listed in this manual are to ensure safe and proper use of this product by the user, and to avoid any danger or loss that might occur to the user or others.
- “WARNING” contains important safety instructions. Be sure to follow these instructions.

⚠ WARNING

	<ul style="list-style-type: none">• Stop using the product immediately and unplug the AC adapter once smoke, smell, unusual sounds or other anomalies occur.
	<ul style="list-style-type: none">• Do not modify, fix, or dismantle this product, as fire, electric shock, or damage may occur.
	<ul style="list-style-type: none">• When the product is at the end of its life, we recommend disposal at a collection point for the recycling of electrical and electronic equipment, rather than with household waste. The symbols on the product, instruction manual and packaging allow for proper sorting and disposal.
	<ul style="list-style-type: none">• KEEP OUT OF REACH OF CHILDREN AND PETS• FOR INDOOR USE ONLY• Please use a DC 24V / 500 mA adapter; otherwise the device may malfunction.• The AC adapter will heat up when the product is operating; this is normal.• Only the included AC adapter may be used with the product, using other AC adapters may result in fire.• Do not connect the AC adapter to the main unit when installing, as electric shock and injury may occur.• The product should always be unplugged and the water tank should always be empty when moving the product or when the product is not in operation.• When unplugging the AC adapter from the outlet, do not pull on the wire. Hold the AC adapter firmly and then unplug it, or else damage or injury may occur.• Please avoid dripping the essential oil onto the exterior of the product or onto furniture. If essential oil dripping accidentally occurs, wipe off immediately to avoid discoloration of the exterior of the product or the furniture.
	<ul style="list-style-type: none">• The product must be disconnected from the electrical outlet before use and maintenance.• Do not handle the main unit and AC adapter with wet hands, or let water or other liquids stick to or spray onto them, as this may result in an electric shock.• Do not use the product when electric cord or plug is damaged or the product has been accidentally hit, dropped, broken, or damaged in any way.• Do not use the product when it has been accidentally dropped, hit, or broken as this may cause the product to short-circuit or malfunction.• Do not bend, heat, or place heavy objects on the power cord as fire or malfunction may occur.• Do not deliberately place your eyes, nose or mouth close to the fragrance mist emitted as this may cause physical discomfort.• This product is not a toy. Do not let children use this product. Keep out of reach of children as electric shock and injury may occur. Children should be properly supervised to ensure that they will not play with this product at all times.• This product is not intended for use by persons (including children) with reduced physical, sensory, or mental capabilities, or lack of experience and knowledge, unless they have been given supervision or instruction concerning use of the product by a person responsible for their safety.• To avoid fire, electric shock, personal injury or product damage, do not place the product in the areas listed below:<ul style="list-style-type: none">* In direct sunlight or next to a heating apparatus.* In dusty places.* On tilted, unstable or uneven surfaces.* Places full of smoke or next to gas stoves.* Places with an ambient temperature of more than 40°C; keep the product away from sources of ignition.* On top of or next to electrics (TVs, stereos, refrigerators, etc) .• Do not place the product on soft surfaces such as carpet, otherwise the ventilation inlet at the bottom may be blocked, causing the device to not function correctly.• Do not remove the lid or put your finger or other objects into the water tank while the product is in operation as water leakage, malfunction or personal injury may occur.

Specifications

Product name	Scent Pot	
Model code	I21201006 White / I21201007 Black	
Atomization mode	Ultrasound	
Continuous atomization time	> 4 hr	Test results may vary depending on ventilation, temperature, humidity, and height of space.
Suggested room size	10 ~ 15 m ² (107.6 ~ 161.4 ft ²)	
Ultrasonic frequency (MHz)	2.4 ± 4%	
Water tank capacity	100 ml (3.38 fl. oz.)	
Power input	100 - 240V ~, 50 / 60 Hz, 12 W	
Product size	10.8 cm L x 10.5 cm W x 12.8 cm H (4.25 in L x 4.13 in W x 5.03 in H)	
Main unit weight	285 g (10.1 oz)	
Operation mode	Continuous mode / 60 min \ 90 min \ 120 min	
Accessories included	AC adapter, cleaning brush, warranty card.	
Design	Switzerland / Taiwan	
Made in China		

Patent Product

Troubleshooting

If you experienced unsatisfactory operations, please follow our troubleshooting guidelines listed below.

Machine does not operate

- Check the adapter
 - Make sure the adapter is fully and correctly plug into the electrical outlet.
- Power cord not connected to the main unit
 - Be sure plug is inserted into the body socket correctly.
- The power is correctly connected but the device still does not operate
 - Check whether the water tank contains any water and then recheck that the ON/OFF switch is on. Check that the water level in the sink does not exceed the maximum water level line (MAX); if this is the case, empty out the excess water.

The product does not atomize or does not atomize effectively

- Check the water type used and water temperature
 - Please use bottled or filtered water between 25°C and 40°C (76.9°F-103.9°F) .
- Dirty atomizer
 - Perform maintenance according to the ‘Cleaning & Maintenance’ section of this manual.
- Placement of the product
 - Place on a firm, level, and stable surface where unaffected by wind.
- Check the water volume
 - Make sure the water do not exceed its designated water mark level.
- The lid does not attach securely to the main unit
 - Reattach the lid according to the procedure in the ‘Operating Instructions’ section of this manual.

Do not attempt to dismantle or repair the product by yourself. If the unit still does not operate satisfactorily, please visit our website www.serenehouse.com, and click link "Support", or contact our customer service.

