



www.serenehouse.com

00020161101

SERENE  HOUSE[®]

Instruction Manual



Arc

Serene Pod[®] Wax Warmer

US

**Please read this manual carefully
before using the product.
After reading this manual, please
keep it in a readily accessible place.**

Arc Serene Pod® Wax Warmer

Serene Pod® Wax Warmer **04** / Product & Accessories **05**

Operating Instructions **06** / Cleaning & Maintenance **08**

Safety Precautions **09** / Troubleshooting **11**

Specifications **12** / Warranty Card **13**

IMPORTANT SAFETY INSTRUCTIONS
INSTRUCTION PERTAINING TO A RISK OF FIRE,
ELECTRIC SHOCK OR INJURY TO PERSONS



WARNING

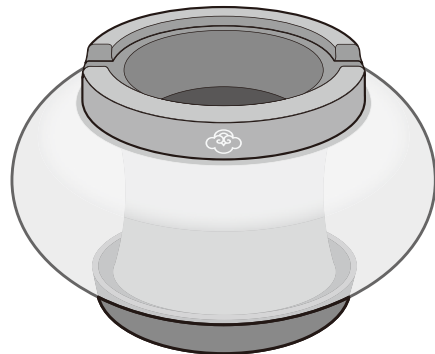
When using electric products, basic precautions should always be followed, including the following:

- A.** Read all instructions before using the product.
- B.** Do not put fingers or hands into the product.
- C.** To reduce risk of injury, close supervision is necessary when used near children.
- D.** Do not use the appliance when the power cord was damaged.
- E.** Failure to follow instructions could result in a fire hazard. The appliance is only to be used with the Serene Pod®. The use of other substances may give rise to a toxic or fire risk. Do not immerse this appliance in water. This appliance is for household use only.
- F.** If an extension cord is used, the marked electrical rating of the extension cord should be at least as great as the electrical rating of the appliance, if the appliance is of the grounded type, the extension cord should be grounding -type 3-wire cord. The longer cord should be arranged so that it will not drape over the counter top or table top where it can be pulled on by children or tripped over unintentionally.

FOR ADULT USE ONLY. THIS IS NOT A TOY AND IS NOT INTENDED FOR USE BY CHILDREN. KEEP OUT OF REACH OF CHILDREN.

Serene Pod® Wax Warmer

- This instruction is suitable for Arc.

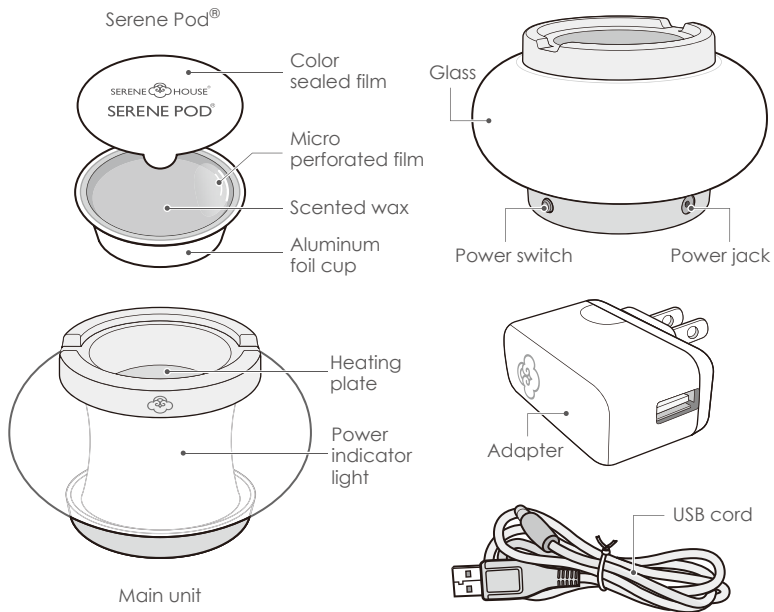


Arc

Reflecting lights from its center, the arc concept emits a beautiful projection of color at different angles, reminiscent of water ripples under a starry night sky.

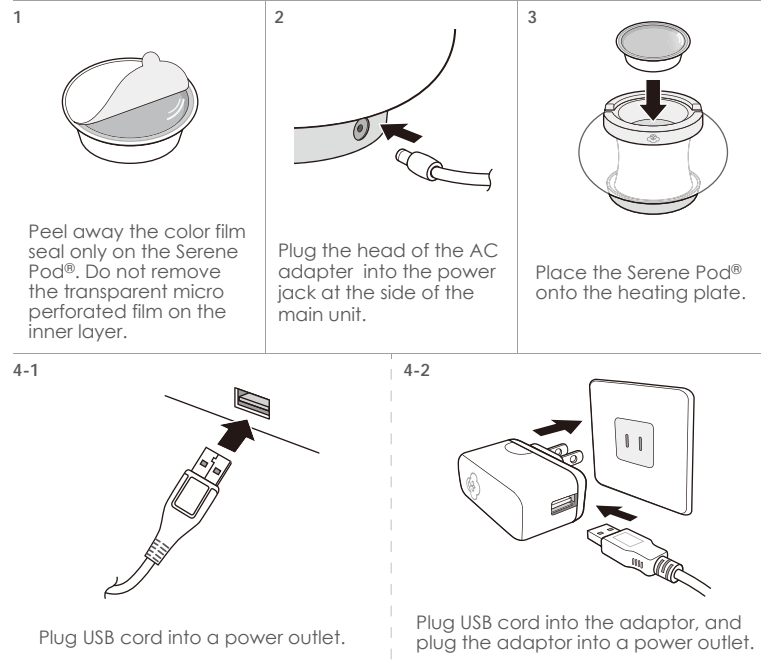
Product & Accessories

- Large Serene Pod® is required to be used with this product.

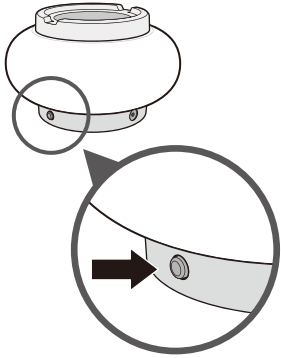


Operating Instructions

- Please remove all packaging before use.



5



- Press the power button to turn the power on.
- Press the power button again to select the light color variations.
- Press the power button until the light goes off to turn off the device, or press and hold the power button for 3 seconds to hard shut off the device.

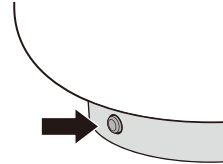
Caution:

1. Only Serene Pod® from SERENE HOUSE can be used with this product; do not heat liquids or other objects in the heating plate.
2. Serene Pod® can be heated repeatedly. If the scent fades or the diffusing performance drops, please consider replacing the Serene Pod®. Serene Pod® can be heated repeatedly. If the scent fades or the diffusing performance drops, please consider replacing the Serene Pod®. Please contact your local distributor for purchase.
3. Do not move or touch when this product is in use. Allow the wax inside Serene Pod® to cool thoroughly into a solid form before handling the device or Serene Pod®.
4. Unplug from power source when not in use.
5. Always place this wax warmer on a firm, flat and level surface.

Cleaning & Maintenance

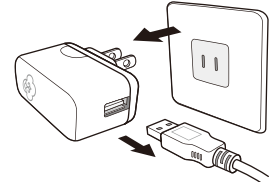
- Always disconnect the product from its power source prior to cleaning & maintenance.
- Never soak or wash this product directly as it may cause mechanical malfunction or danger.
- Never use acidic cleansing agents as it may cause malfunction to the product.
- Please perform cleaning & maintenance at least once a week; failing to do so may cause the product to malfunction. Please maintain it on a regular basis.
- Allow to dry thoroughly before use.

1



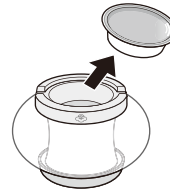
Turn off the power device.
See operating instructions.

2



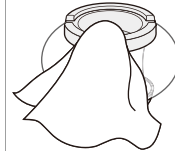
Unplug the power cable from
the outlet.

3



Remove the Serene Pod®.

4



Please use a damp cloth, moistened with warm water or neutral cleaning agents, to clean the heating plate until it is clean. Place the Serene Pod® back onto the heating plate. This completes the cleaning and maintenance process.

Precautions for Use

- Please read all instructions before using the product. Use it safely and correctly.
- Be sure to handle this product with care to avoid impacts or drops.
- If you have any special physical conditions, such as pregnancy, lung failure, cancer, epilepsy, or other illnesses, please consult your doctor before use.

Precautions for Use of Serene Pod®

- Do not remove or damage the transparent micro perforated film of the Serene Pod® in order to avoid spillage of melted scented wax.
- Please do not touch Serene Pod® when it is being heated to avoid accidental burns.
- Please keep children and pets away from Serene Pod® to prevent accidental ingestion.
- Serene Pod® is not edible; please do not eat it.
- Stop using this product and open windows for ventilation if you start to feel uncomfortable.
- Replace with a new Serene Pod® to ensure best scent ability if the aluminum foil cup of Serene Pod® is deformed in any way (including the bottom).

Safety Precautions

Make sure to follow the instructions below to ensure safe usage:

- The precautions listed in this manual are to ensure safe and proper use of this product by the user, and to avoid any danger or loss that might occur to the user or others.
- "WARNING" contains important safety instructions. Be sure to follow these instructions.



- Stop using the product immediately and unplug the AC adapter once smoke, smell, unusual sounds or other anomalies occur.



- Do not modify, fix, or dismantle this product, as fire, electric shock, damage or injuries may occur.



- When the product is at the end of its life, we recommend disposal at a collection point for the recycling of electrical and electronic equipment, rather than with household waste. The symbols on the product, instruction manual and packaging allow for proper sorting and disposal.



- Please use the proper voltage as required by the product.
- When this product is not used for long periods of time, make sure to unplug it from the power source and remove Serene Pod® from the heating plate; failure to do so may result in electric shocks or malfunction.
- The product must be disconnected from the power source prior to cleaning and maintenance.
- Once all power sources are disconnected, allow Serene Pod® to cool thoroughly into a solid form before handling, cleaning and maintenance.
- If the liquid wax accidentally dripped onto objects such as the device or the floor, wipe clean with a damp cloth immediately to avoid discoloration of the exterior of the product or the furniture.



- Do not use the product when cord or plug is damaged or the product has been accidentally hit, dropped, broken or damaged in any way as such actions may cause problems such as electrical shocks or short circuiting.
- Do not operate this product with wet hands, or allow water or other liquids to drip or spill onto the product as these may cause electric shock or injuries.
- Do not power on the device when there is no Serene Pod® in the heating plate, doing so may cause the product to malfunction.
- Do not put your finger or any other objects into the heating plate while the product is in use, doing so may cause personal injuries or product malfunction.
- This product is not a toy. Do not let children use this product. Keep out of reach of children as electric shock and injury may occur. Children should be supervised to ensure that they do not play with the product.
- To avoid fire, electric shock, personal injuries or product damage, do not place the product in the areas listed below:
 - Under direct sunlight or high temperature environments, and keep away from fire sources
 - Places with high pressures or around combustible objects.
- Do not bend, heat, or place heavy objects on the power cord as fire or malfunction may occur.

Troubleshooting

When the product is suspected of malfunctioning, please confirm the following items before sending it in for maintenance :

Problem: Machine does not operate

- Plug is not properly inserted into the power source
→ Please make sure that plug is properly inserted into the power source.
- The power switch is not properly switched on
→ Please check and make sure the power switch is properly switched on.

Problem: Poor Fragrance Emission

- The scent fades or the transparent micro perforated film is damaged
→ Please replace the Serene Pod[®] with a new one.
- The heating plate is dirty
→ Perform maintenance according to the Cleaning & Maintenance section of this manual.

Do not attempt to dismantle or repair the product by yourself. If the unit still does not operate satisfactorily, please visit our website www.serenehouse.com, and click link "Support", or contact our customer service.

Specifications

- Fragrance results may vary depending on ventilation, temperature, humidity, and the size of space.

Arc

Model code:	161205002 Amber / 161205003 Purple / 161205004 Gray
Suggested room size:	15 ~ 35 m ² (161-376sq ft)
Power input:	DC 5 V , 7 W
Product size:	Ø 13.8 cm x 8.4 cm H (Ø 5 3/8 in x 3 1/4 in H)
Main unit weight:	450 g ± 5 %
Colors of light:	Seven colors
Operation mode:	Continuous mode.
Accessories included:	Adapter / USB cord / Manual / Warranty Card
Designer team:	SERENE HOUSE
Made in China	

This device complies with Part 15 of the FCC Rules.

Operation is subject to the following two conditions:

- This device may not cause harmful interference.
- This device must accept any interference received, including interference that may cause undesired operation.



RoHS
compliant



Patent Product

Warranty Card



This product is warranted against defective materials and workmanship. Warranty period is one (1) year from the original purchase. Any defective part will be replaced at no charge if it has not been tampered with and appliance has been use accordingly to our printed instructions.

If you experienced unsatisfactory operations, first follow Troubleshooting and Cleaning & Maintenance instructions. If the unit still does not operate satisfactorily, please call or write to a SERENE HOUSE authorized distributor.

Or you may visit our website as <http://www.serene-house.com/en/support.html> explaining just how the unit is operating. Specify your product name and model number, our distributor will provide further instructions on how to correct the trouble yourself, or will ask you to return the unit for repair or replacement.

This product warranty does not cover damages caused by misuse or abuse, accidents, the attachment of any unauthorized accessory, alteration to the product or any other conditions whatsoever that are beyond the control of SERENE HOUSE. To validate your warranty, please complete all the information in the warranty card below and send it along with your purchase receipt copy to a local SERENEHOUSE distributor via fax or email.

This warranty is issued by SERENEHOUSE INTERNATIONAL ENTERPRISE LTD. and is valid for one (1) year from purchase receipt date.	
Product name	Model Number
Store of Purchase	IN - STORE <input type="checkbox"/> ON - LINE <input type="checkbox"/>
Customer Information	Purchase Receipt
Family Name	SERENE HOUSE USA Inc. 1860 Renaissance Blvd. Sturtevant, WI 53177 USA T 1-877-357-5751 / T 1-262-886-2198 warranty@serenehouseusa.com
Given Name	
Street Address	
City	
State	
Zip code	
Country	
Telephone	
Fax	
E-Mail	

There is no warranty with respect to the following which may be supplied with the product. They included ceramic chips, cleaning brush, scraping spoon, scented glass tube.